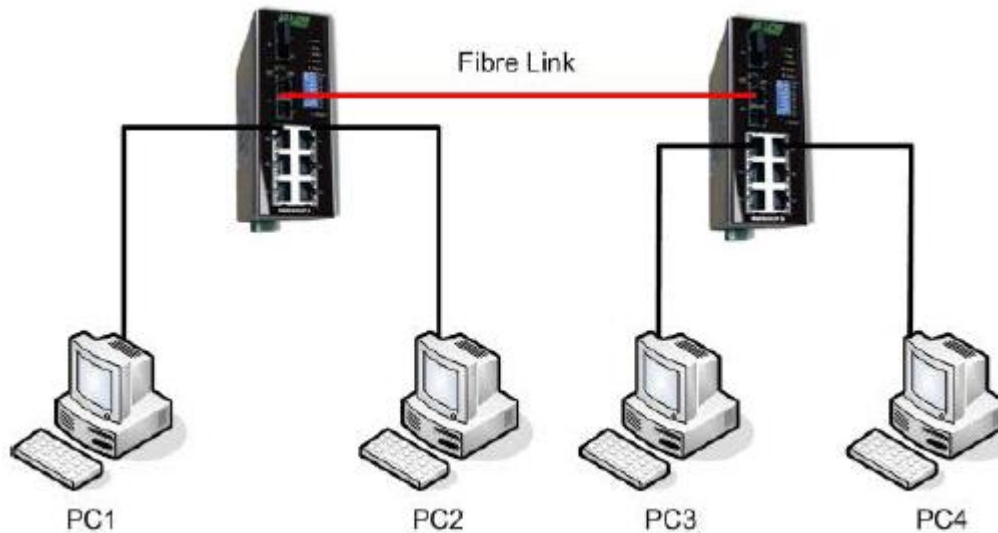


Topic / Issue: 802.1Q VLAN configuration on RMS602FM/S

Written By: Scott Young

Use the following as a guide to Configure 802.1q VLAN's (Tagged VLANS)

- RMS602FM
- RMS602FS



In this example we will configure PC1 and PC3 to reside on VLAN 2 and PC2 and PC4 to reside on VLAN 3. After we have configured the VLAN's, VLAN 2 will be unable to communicate with VLAN 3.

Switch 1					Switch 2				
Port	Connecting Device	VLAN Group	PVID	Tag/Untag	Port	Connecting Device	VLAN Group	PVID	Tag/Untag
1	PC1	2	2	Untagged	1	PC3	2	2	Untagged
2	PC2	3	3	Untagged	2	PC4	3	3	Untagged
8	Switch 2	2, 3	1	Tagged	8	Switch 1	2, 3	1	Tagged

1. On switch 1 create VLAN 2. Click on VLAN Configuration in the top menu, from the VLAN Configuration Mode drop down box select 802.1Q. Click on the Basic tab and select Add to create your VLAN.

2. Enter a Group name and the VLAN ID, in this case the VLAN ID will be 2. Highlight the necessary ports that you want to add to the VLAN and click Add. In this case we will add ports 1 and 8.

-
2. Note: Port 8 will be added to this VLAN because the port that is connecting each switch must reside on all VLAN's that have been configured on the switch.

3. Click Next, you will now need to select whether the port will be a tagged or untagged port. In this case port 1 will be untagged and port 8 will be tagged.

Note: Ports will only be tagged if they are connecting to a device that also supports 802.1Q VLAN's.

Click the Apply button to save your VLAN Settings.

4. Repeat steps 1, 2 and 3 again to create VLAN 3. Please ensure that the VLAN ID is now replaced with VLAN ID 3 and the member ports are 2 and 8.

5. Click on the Port VLAN ID tab to configure the ports PVID, which will be used for all untagged packets that the switch receives.

Highlight Port 1 and change the PVID to 2. Click the Apply button.

Highlight Port 2 and change the PVID to 3. Click the Apply button.

Port 8 will keep its original PVID of 1, because this is a tagged port, a PVID will not need to be applied.

6. Now click on the Basic tab and highlight the Default VLAN and click edit. Now click next and select Port 8 to be a Tagged port and click the Apply button.

Note: If one port resides in more than one VLAN group then you must ensure that if the Port is Tagged then it is Tagged in all VLAN groups that it is a member of. Remember that Port 8 is a member of VLAN 2, 3 and the Default VLAN. Please ensure that Port 8 is tagged in all VLAN groups.

7. You will now need to repeat steps 1 to 6 on Switch 2.

Note: Remember to click on the Save Configuration button to save your settings. Otherwise the settings you made will be lost when the RMS602F is powered off.

Summary:
(If required)