



The Perle CS9000 Console Server offers network managers a reliable and cost-effective solution to remotely manage and troubleshoot distributed server farms/racks and network appliances (routers, RAS etc). By connecting the console management ports to the serial ports on the Perle CS9000 Console Server they can be managed in band or out of band via a corporate LAN/WAN or dial-in connection.

### A cost effective solution for remote backup management of 8 to 48 network devices

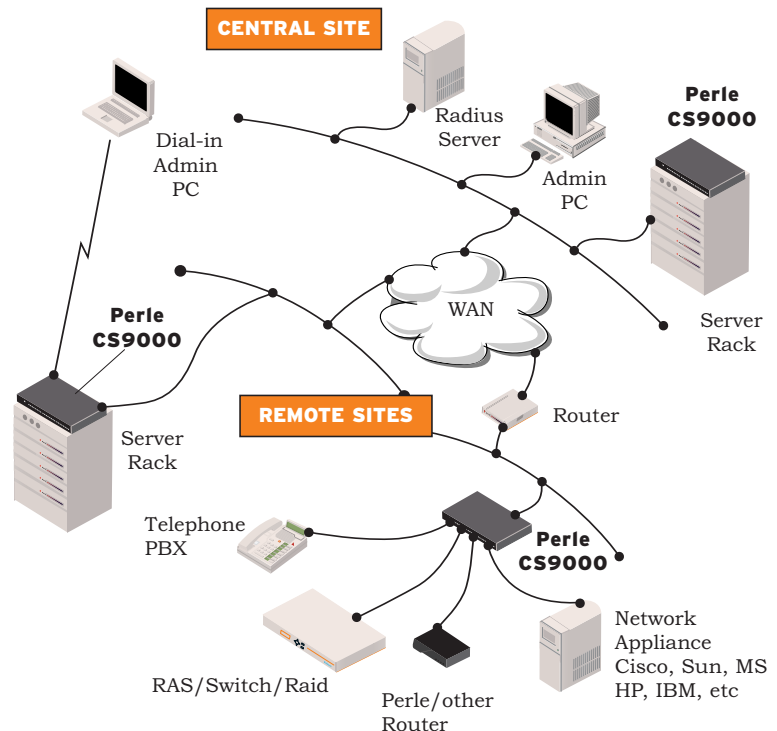
#### Features and Benefits:

- Easy local or remote configuration and setup
- In and Out of Band management allowing LAN/WAN or dial in access to network devices
- Windows Server 2003 EMS support
- No break signal issued on power cycle to prevent costly Sun Server reboots
- Large local port buffers ensure easy device management and maintenance
- Secure unlimited remote buffer data storage allows vital system information to be encrypted and stored through NFS
- Advanced menu system for secure login and easy device management
- Integrated security features provide secure access to critical network devices
- Multi-session capability gives secure port access rights to multiple users
- Lifetime warranty for security and peace of mind

#### Application

- Server Farm Management
- Network Appliance Management including:
  - Telco Equipment
  - Routers
  - Remote Access Servers
  - Firewalls
  - PBX's
  - Switches
  - Raid Boxes

Since an administrator can connect anytime from anywhere, they save significant amounts of time and reduce overall costs by keeping system disruption to a minimum. With the provision of local or secure remote port buffers, data generated by attached devices while unattended can also be viewed anytime from anywhere to aid in problem diagnosis.



The Perle CS9000 provides a comprehensive suite of security features that allow organisations to implement robust security planning and prevent unauthorized access. The CS9000 comes configurable for SSHv1 or SSHv2 for data encryption. Other security features include packet filtering, support for RADIUS authentication and the ability to disable unwanted daemons such as Telnet and http.

A wide array of software tools allow the Perle CS9000 to be configured, managed and flash upgraded either locally or remotely over the network or via the Internet.

Command line and menu interfaces are also included, as is a separate local management port. In addition, industry standard control and management facilities are supported – SNMP, BOOTP, DHCP and DNS.

#### Class Leading Service and Support

The Perle CS9000 is backed by the best service and support in the industry including Perle's unique lifetime warranty.

## Technical Specifications

### Connectivity

#### Serial Ports

- CS9008 model: 8 RS232 serial ports
- CS9016 model: 16 RS232 serial ports
- CS9024 model: 24 RS232 serial ports
- CS9032 model: 32 RS232 serial ports
- CS9048 model: 48 RS232 serial ports

#### Backbone LAN Attachment

- 10/100Mbps RJ45
- Dual 10/100Mbps RJ45 (CS9032, CS9048)

#### Management Port

- RS232 DB25 Female

### Physical

#### Architecture

- 32 bit processor
- 16Mb Ram
- Custom ASICs
- Up to 230 Kbps throughput per port

#### Serial Port Signals/Protection

- TXD, RXD, RTS, CTS, DTR, DSR, DCD and GND
- All serial ports are ESD protected to 15kV through air

#### LED Indicators

- Main – Power and Network
- Serial – Send and Receive integrated into each RJ45 connector

### Power, Dimensions and Weight

- AC models: internal, auto-ranging, 110V-240V,
- 25W (8, 16, 24 port models)  
40W (32, 48 port models)
- 1.77" x 9.01" x 16.93" (H x L x W) (without ears)
- 8.7 lbs

### Environmental

- Operating Temperature: 32°F to 110°F
- Storage Temperature: -22°F to 158°F
- Operating Humidity: 5 to 95% RH (non-condensing)
- Storage Humidity: 5 to 95% RH (non-condensing)

### Approvals

- EMC: EN55022 Class A, FCCA
- Safety: CSA 22.2.950, NRTL/C, IEC 950, EN60950
- CE Approval
- Solaris Ready

### Administration

Local or Remote management using:

- Command Line
- Menu Command Interfaces with Easy Port Access
- JETset Web-based configuration utility
- Local and remote port buffers

### Network Protocols

- TCP/IP, UDP, CIDR, ICMP, SNMP\*, ARP, Proxy ARP, RARP, DHCP\*, BOOTP, RIPV1, RIPV2 and Static Routing, SSH\*, PPP, SLIP, CSLIP, TELNET\*, RLOGIN, CLEAR TCP HTTP, WINS, DNS, SNTP

\* can be disabled if required

### Remote Access and Security

- SSH v1 and v2 supported
- Packet filtering
- RADIUS authentication (RFC2058)
- RADIUS accounting (RFC2059)
- PAP and CHAP
- Fixed and Roaming Callback
- Modem initialization strings
- Line Access Rights
- Local Authentication
- Users Access Rights

### Client Software Requirement

- Administrator's client system must be capable of SSH or Telnet over a TCP/IP network. Break can be sent from Telnet and SSH if required.

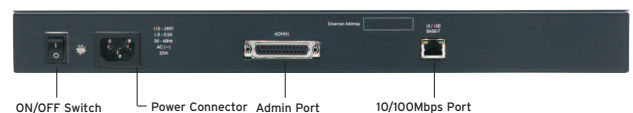
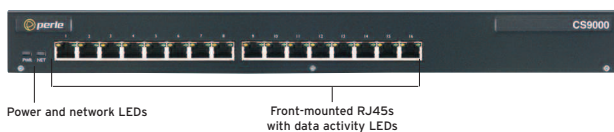
### Upgrades

FLASH update via:

- Network using BOOTP, DHCP or TFTP
- Local management port using Jetload

### Warranty

- Limited lifetime warranty



[www.perle.com](http://www.perle.com)

Perle products are constantly reviewed and updated to meet customers' needs, as such specifications and capabilities are subject to change without notice. We endeavor to keep product descriptions as current as possible; for the latest up-to-date information, please visit our web site at [www.perle.com](http://www.perle.com). Perle is a registered trademark of Perle Systems. All other product names are trademarks of their respective holders. Copyright © Perle.