

Date: 17/07/08

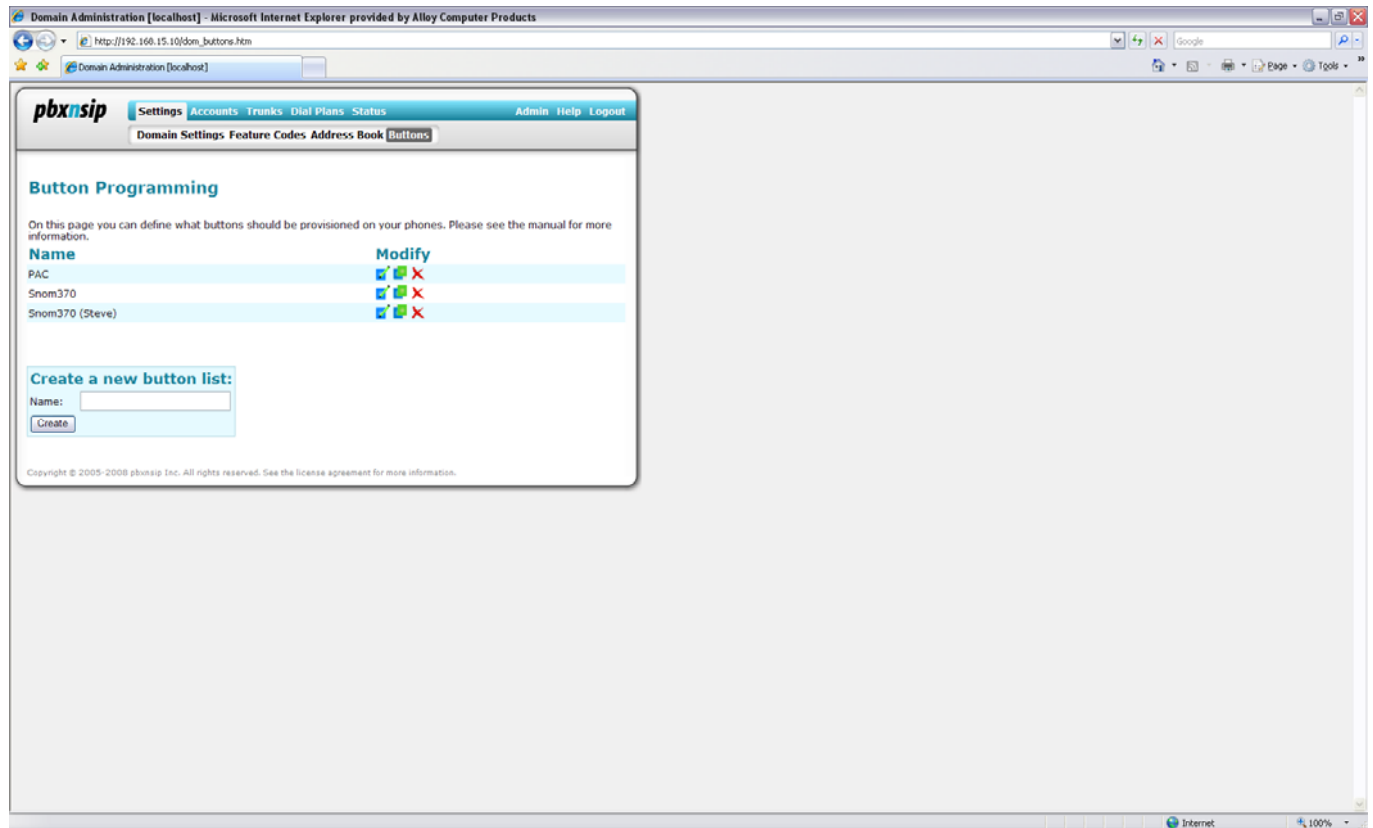
Revision Date (6 months max): N/A

Topic / Issue: Configuring “buttons” on PBXnSIP and Snom IP phones**Written By:** Steven Sismanis

This article describes how to configure “buttons” on PBXnSIP (commonly referred to as Watched Extensions, BLF keys).

Once you have logged into PBXnSIP and entered into your Domain, Click the settings menu and go to the Buttons tab. Give your new button list a name and select Create.

Once it has been created, edit the entry by selecting the left icon under the Modify column.



This will bring up the button list assignment page.

In the name column you need to enter in a number, this step is very important as PBXnSIP links this number to the entry in the Snom phone, which will be covered later in the article.

See example below:

Name= 1

Type= Monitor extension (on phone)

Parameter= 44

Name indicates the first button key.

Type is the type of button you want to assign.

Parameter is the extension number you want to monitor.

Once you have done this Click Save.

The screenshot shows a web browser window displaying the PBXnSIP administration interface. The page title is "Button List 'Snom370 (Steve)'" and it contains a table for configuring button assignments. The table has three columns: Name, Type, and Parameter. The first row shows a button with Name '1', Type 'Monitor extension (on phone)', and Parameter '44'. The second row shows a button with Name '2', Type 'Monitor extension (on phone)', and Parameter '43'. The third row shows a button with Name '3', Type 'Monitor extension (on phone)', and Parameter '45'. A 'Save' button is located below the table. The interface also includes a navigation menu with options like Settings, Accounts, Trunks, Dial Plans, Status, Admin, Help, and Logout.

Name	Type	Parameter
	Not assigned	
1	Monitor extension (on phone)	44
2	Monitor extension (on phone)	43
3	Monitor extension (on phone)	45

You will now have to edit an extension in your Accounts page to assign the buttons profile to the relevant extension(s).

Once you have edited the extension, click on the Registration tab and scroll down to the "Configuration Profile" option, from the drop down box select the profile you created and Save.

The screenshot shows the PBXnSIP web interface in a Microsoft Internet Explorer browser window. The page title is "Domain Administration [localhost] - Microsoft Internet Explorer provided by Alloy Computer Products". The browser address bar shows "http://192.168.15.10/don_ext2.htm". The page has a navigation menu with "Settings", "Accounts", "Trunks", "Dial Plans", "Status", "Admin", "Help", and "Logout". Below the navigation menu is a sub-menu with "List", "Create", "General", "Redirection", "Mailbox", "Email", "Registration", and "Permission". The main content area is titled "Registration Behavior for 46".

User Agent Setup:

- Trusted IP Addresses:
- Bind to MAC Address:
- Password has been used for provisioning: yes no
- Parameter 1:
- Parameter 2:
- Parameter 3:
- Lines:
- Codes Preference:
- Emergency Destination Number:
- Configuration Profile:
- Dialog Permissions:
- Log Registration Changes:

Type	Target Contact	Device	Expires	Reboot
REGISTER	46	sip:46@192.168.15.46:1049;line=spatuhhn	snom370/7.1.30	35

Click [here](#) to clear the registrations.

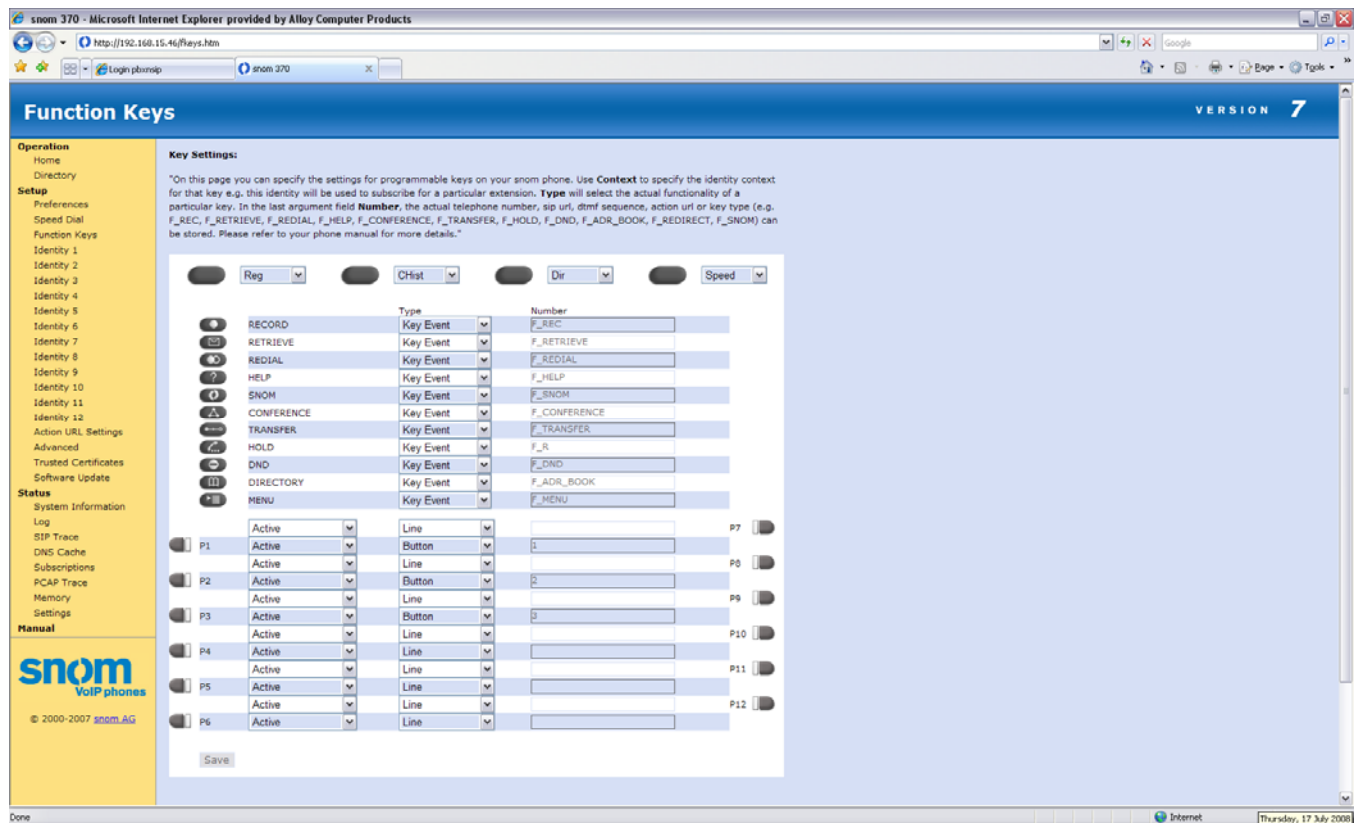
Add Contact:

This is all the configuration required in PBXnSIP; you will now have to configure your Snom IP phone to match this profile.

Browse into your Snom phone and go to the Function Keys section. In the P1 Key, set the following entries:

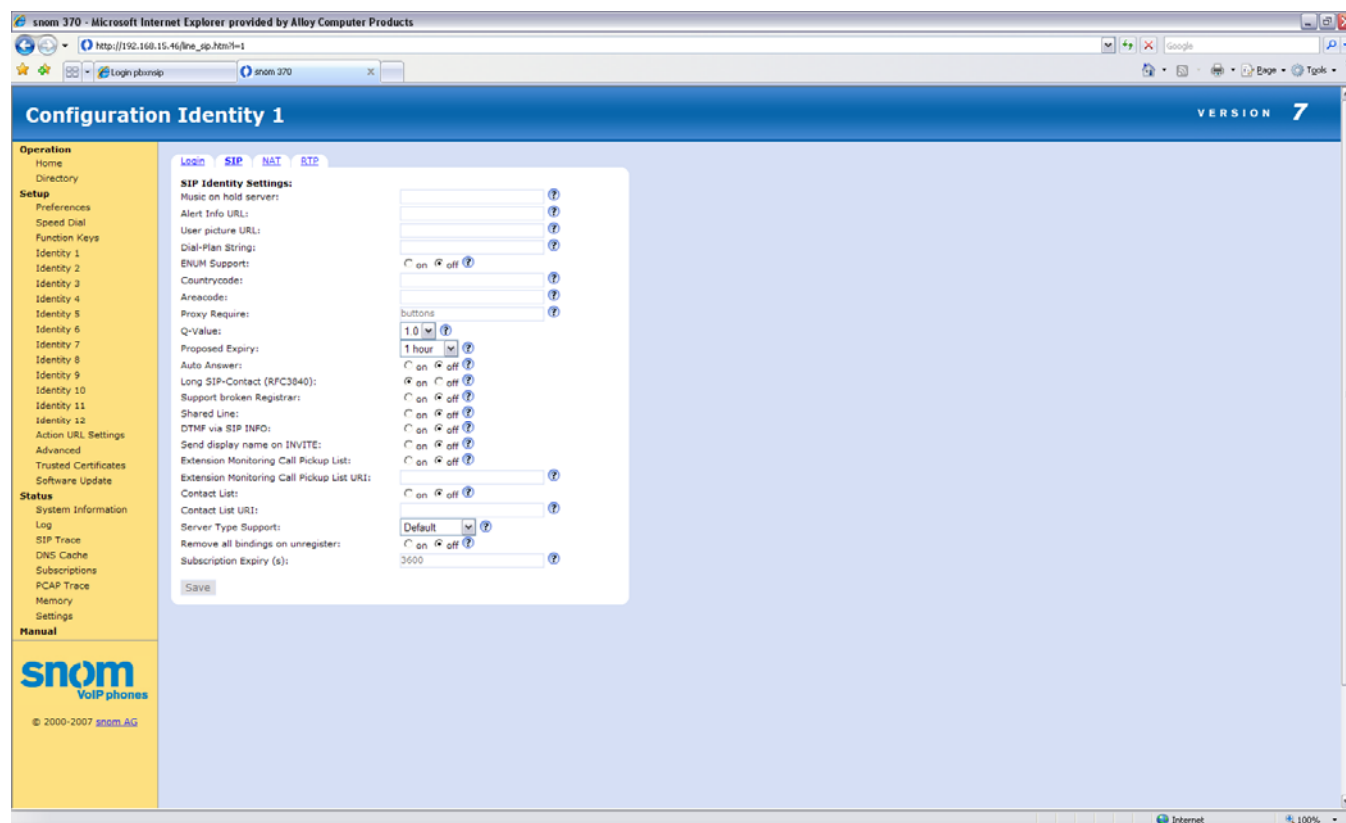
P1= Active, Type= Button, Number= 1

(This 1 entry links to PBXnSIP and watches the extension you assigned to number 1 when the profile was created.)



Note: Your Snom phone will need to be on Version 7 f/w to have the button option in the drop down box. Alloy recommends f/w v7.1.30 or above.

When this have been configured go to your Identity settings that holds the PBXnSIP registration, in the SIP tab under the “Proxy Require” option enter in the word “buttons” and Save.



Extension monitoring should now be active and working, if the buttons are not active once this has been completed stop and start your PBXnSIP service.