



Topic / Issue: How to retrieve Default Settings if Username and Password are unknown

Written By: Scott Young

If you have forgotten the Username and Password for your ESM-24T02M switch please follow the instructions below:

Connect the provided serial cable to your computer and the switch and run a terminal emulation program such as HyperTerminal.

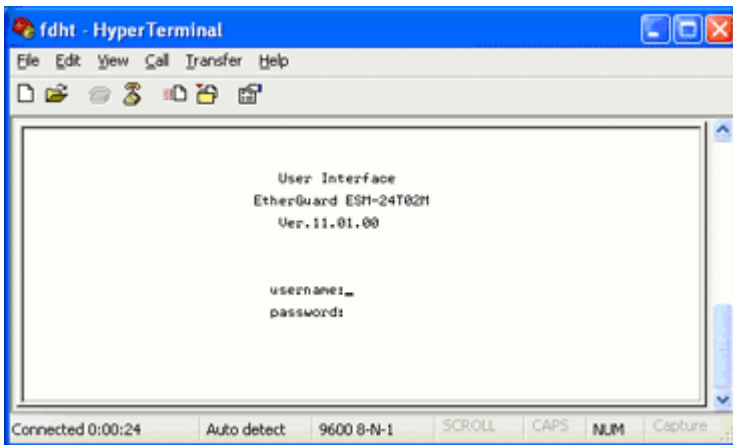
Create a new connection to the switch with the following settings:

9600, 8, N, 1, N

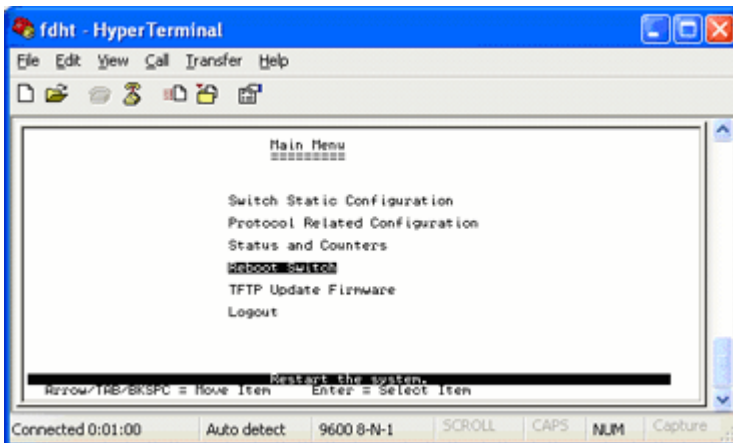
Once you have a connection login to the switch with the following username and password:

Username: flash

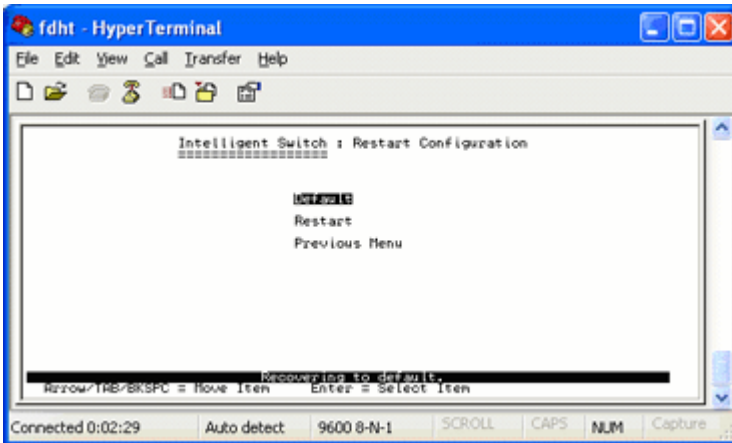
Password: reset



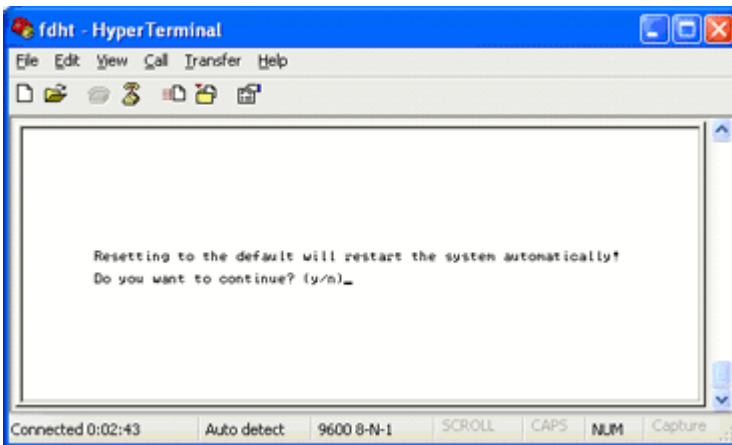
Now select Reboot Switch from the Main Menu.



Select **Default** from the list and press enter.



Now confirm that you want to load the default settings by pressing 'Y'



You can now access the ESM-24T02M with it's default settings.

Summary:
(If required)