
Topic / Issue: Entia Install under Windows 2000/2003- Entia Range

Written By: Scott Young

The following provides instructions on installing the Entia 5536 series of cards under Windows 2000 and 2003.

Installing Entia PRI Ras Adapter Under Windows 2000 (Windows 2003 - see note A)

A) Install the adapter into an available PCI slot.

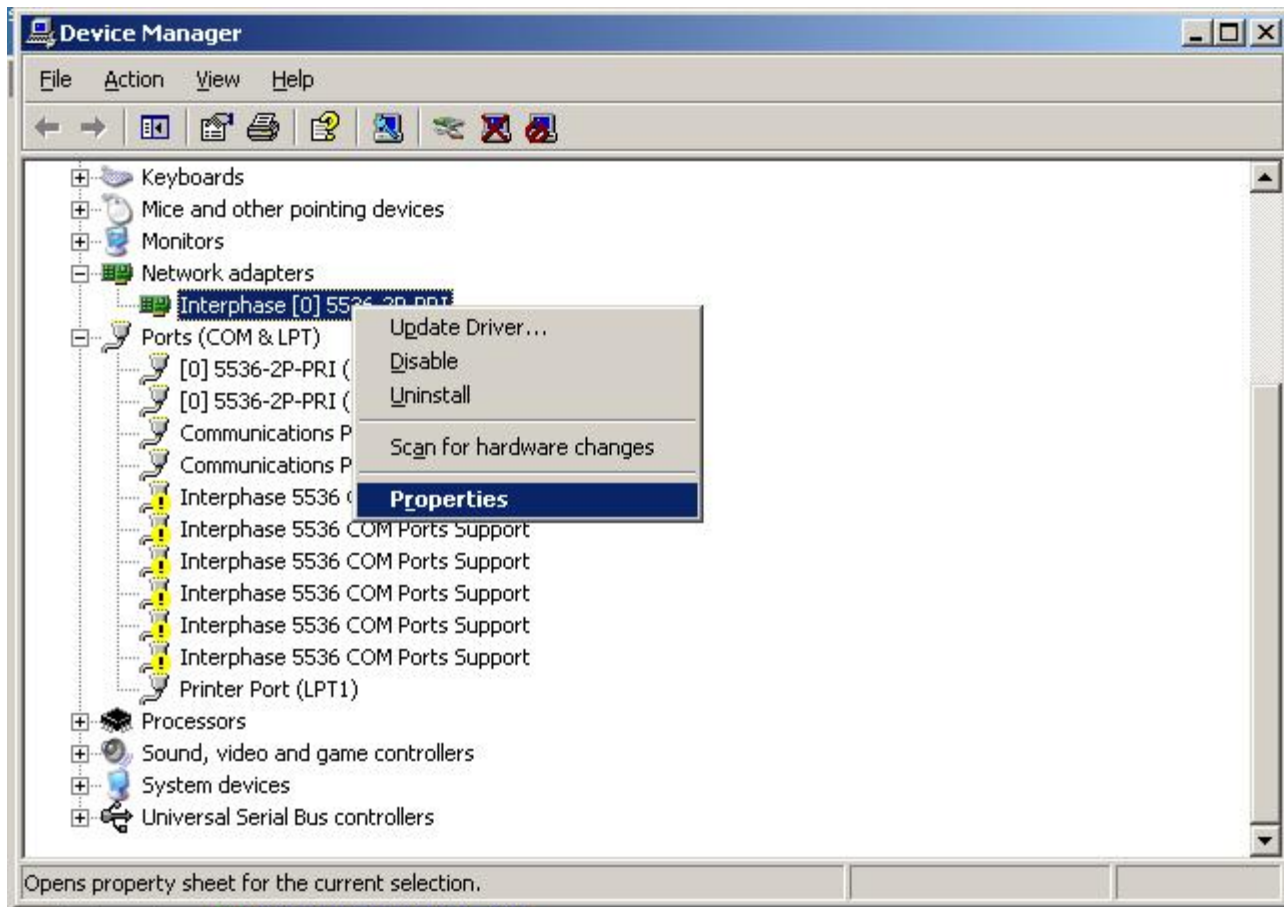
B) Start the OS, Windows Should detect the new hardware and prompt for the drivers.

C) Select the drivers downloaded from the Alloy driver update site:
<http://www.alloy.com.au/download.asp>

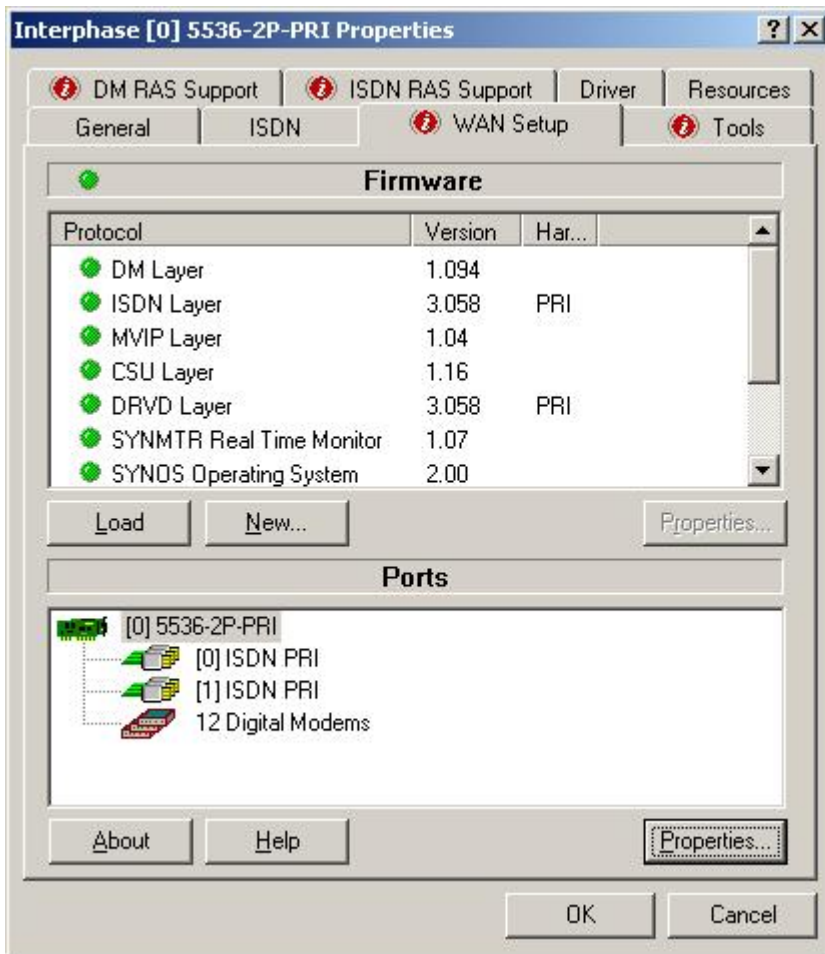
D) The OS will install;

- 1) the Main drivers for the Card
- 2) the ISDN modem drivers - these are the ISDN channels - not the V90 drivers
- 3) the Digital Modem drivers - these enable answering of V90 calls. (56K)
- 4) Com port emulation drivers for the card. On WIN 2000 this is done once for the whole card. On WIN 2003, this will be done for all available channels.

E) Configuration for the card is done from the Device Manager - Properties Tab



F) From the ISDN TAB, the card should be configured as European ISDN DSS1 (not Australian ISDN)



G) From the WAN Setup TAB;

-: Select Properties of the 5536-?P-PRI item in the lower Ports section.

-: in the Digital Modem - Com Port section modify the Com Port Emulation to 0 (zero)

Using com port emulation is not recommended.

-: Select Properties of the ISDN PRI item in the lower Ports section.

-: Select DS1 properties and enable CRC4 (CRC = CRC4)
(if a dual port card, configure both ports)

-: Select Properties of the Digital Modem item in the lower Ports section.

-: Ensure A-Law is selected

H) This completes install of the card. You will now need to configure RAS with either the Digital modem devices or the ISDN devices or both.

NOTE: Windows 2003 server is not officially supported by Interphase. Some testing has been performed by Alloy, and the cards do seem to install, configure and operate correctly in a Windows 2003 environment using the Windows 2000 drivers.

Summary:
(If required)