

Topic / Issue: Equinox - DMP configuration- 990309

Written By: Scott Young

The following support page explains how to install and configure a Digital Modem Pool in Windows NT4.0.

Before you install the DMP, you must firstly install a 64 or 128 port Host Controller Card as a network adapter in your network properties. Insure that you install the Host Controller Card using Driver Version 4.12 or later. The driver will automatically detect that you have a DMP connected and install the software giving you a DMP icon in the control panel.

Click on the Start Button

=>Settings

=>Control panel

Double click on the Digital Modem Pool icon

=>Highlight the required DMP and select **CONFIGURE** as shown below



If you can not select configure, your DMP may still be initializing

A configuration Wizard will now appear

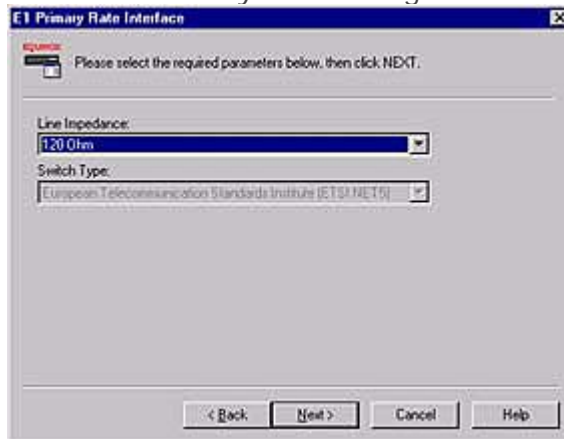
=>You now have to select the Line and Signalling type you will be using

=>Select **E1 Primary Rate Interface** which allows the DMP to receive both analog (V.90) and digital (ISDN) calls, as well as ticking the Display Advanced Configuration Options box as shown below.

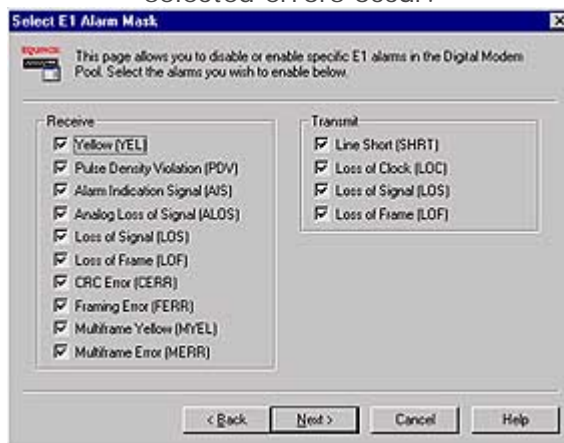


You will now be prompted with a warning saying that your configuration has changed
Tick the proceed with change box and click **NEXT**

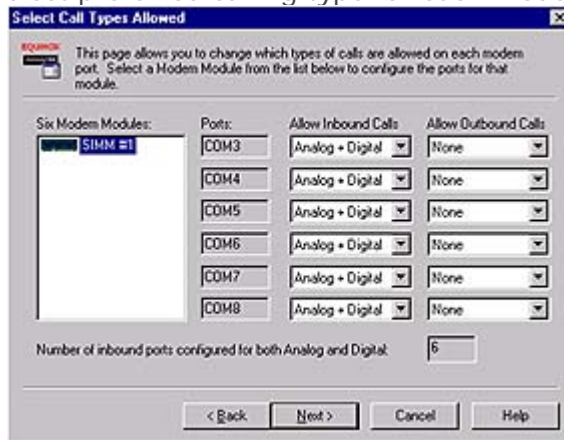
Now you have to select the Line Impedance of the cable you are using
Select the default **120 Ohm** if you are using RJ45 or 75 Ohm for BNC



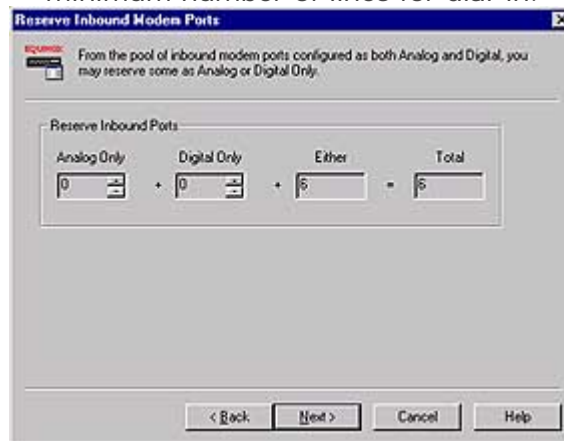
The next screen lets you select what alarms you would like to enable in the DMP
By selecting certain alarms it triggers the alarm LED on the DMP to flash when any of the selected errors occur.



The next screen allows you to select either inbound or outbound calls for each modem
Select preferred calling type for each modem



The next screen allows you to load-balance analog and digital calls to provide specific levels of service to your dial-in users
e.g You can reserve a number of digital lines to ensure that ISDN dial-in users will have a minimum number of lines for dial-in.



Click **Finish** and you will return to DMP screen
Now click **exit** and you will need to restart your PC

Once you have completed the installation of the Digital Modem Pool, you will have to install Remote Access Service (RAS) on to your PC.

Installing RAS in NT 4.0

Click on the Start Button
Select - Settings
Control Panel
Double click on the network icon

Select the Services Tab
Click on **ADD**
Select Remote Access Services



It will now prompt you with a warning explaining that you have no compatible RAS devices installed and will ask you if you would like RAS to invoke the modem installer

Select **YES**

Now you have to select what port you would like windows to search for a modem on.
This will be the starting com port that you used when you installed your Host Controller Card

Windows should detect the modem as an **Equinox V.90 CSM** modem



Once windows has detected your modem it will ask you what com ports you would like to install the modem on

Select all the com ports you would like the modems to be installed on

It will now bring up a screen asking you to 'Add RAS Device'

Select the Equinox V.90 CSM modem and click **OK**



You can now set up what protocols you would like to use by clicking on the **NETWORK** button.

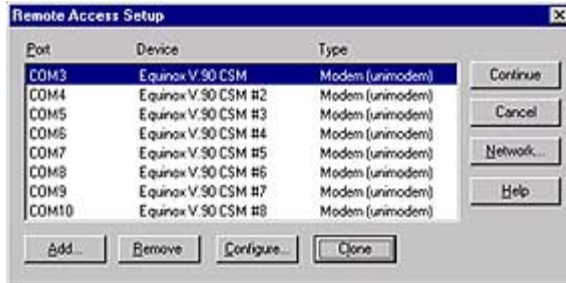
Select protocols depending on your needs

Now you will have to configure the modem to receive calls or to dialout by clicking on the **CONFIGURE** button

Select calling types that you require and click **OK**



Once you have configured the modem you can now clone the rest of the modems
Click on the **CLONE** button until there are no more modems to install and click **CONTINUE**



It will now tell you that RAS has been successfully installed, click **OK**
Now close the network properties and your PC will need to be restarted

Summary:
(If required)