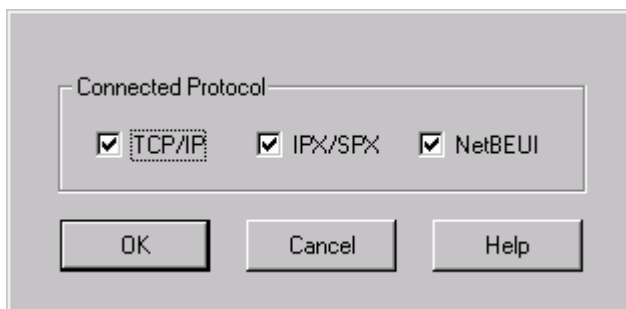


Topic / Issue: How to configure Bi-Admin to find a print server on the network

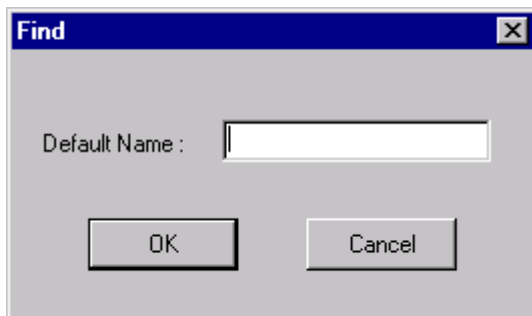
Written By: Scott Young

The following support page offers tips for finding Alloy's Print Servers on your network using the Bi-Admin utility.

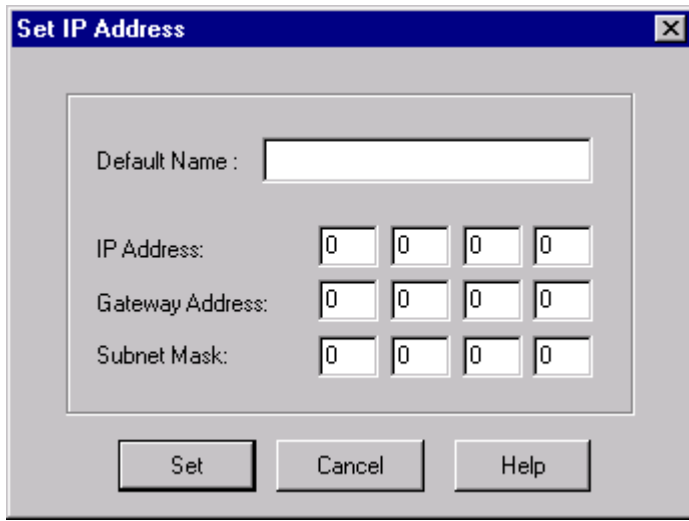
1. Open Bi-Admin
2. Under InitDevice, Connected Protocol..., you can select to search for the device using all three protocols:



3. To search for the device you can now either:
 - * Click Refresh or
 - * Click InitDevice, Find... (and then entering the SCXXXXXX name of the Print Server)



4. If you still cannot see the Print Server listed in Bi-Admin:
Click InitDevice, Set IP Address... (and then enter the SCXXXXXX name of the Print Server)
and give the device an IP Address on your network range



The image shows a Windows-style dialog box titled "Set IP Address" with a close button (X) in the top right corner. The dialog box has a light gray background and contains the following fields and controls:

- Default Name :** A text input field.
- IP Address:** Four individual input boxes, each containing the number "0".
- Gateway Address:** Four individual input boxes, each containing the number "0".
- Subnet Mask:** Four individual input boxes, each containing the number "0".

At the bottom of the dialog box, there are three buttons: "Set", "Cancel", and "Help".

Summary:
(If required)