

**Topic / Issue:** How to setup PCAnywhere via NAT

**Written By:** Scott Young

Router setup to use PCAnywhere from remote location with IP515LM, IP505DV or IP5020.

The following configuration sets up policies to enable Symantic PCAnywhere to be used via one of the listed IP sharing routers.

Configuring the policy is slightly different between the various devices, but still has the same affect.

Ports used by PCAnywhere are 22, 32, 5631 and 5632.

Note: PC Anywhere version 10.x only uses ports 5631 and 5632

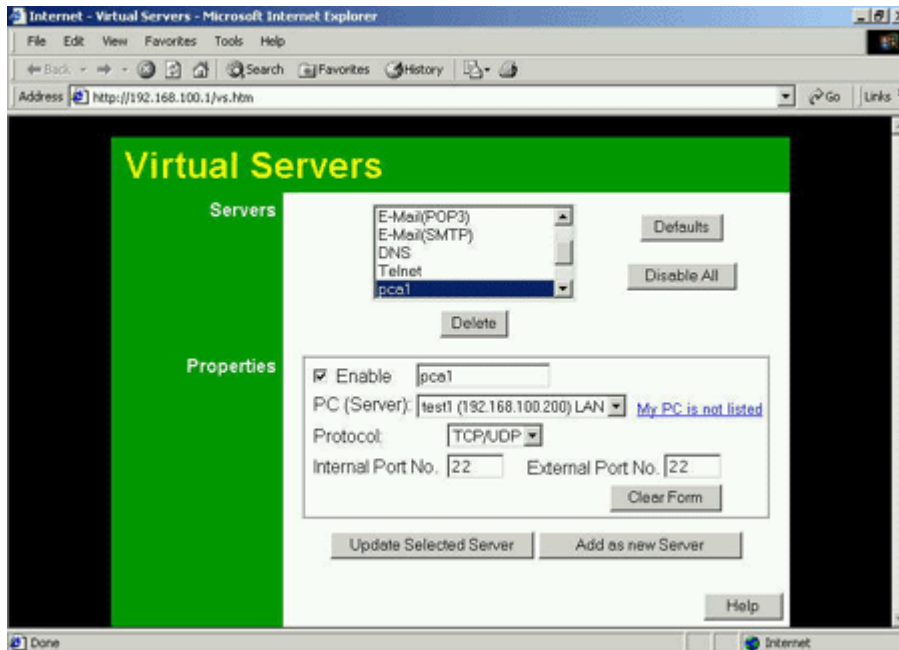
### IP515LM/IP515H Setup

1. Go to "Advanced" on the Home page, then select "PC Database".

You will need to select "add computer " and then the computer on the LAN that you want to send the PC-Anywhere request through to. (This will be your host system)

2. Go back to the Advanced screen, then select "Virtual Servers".

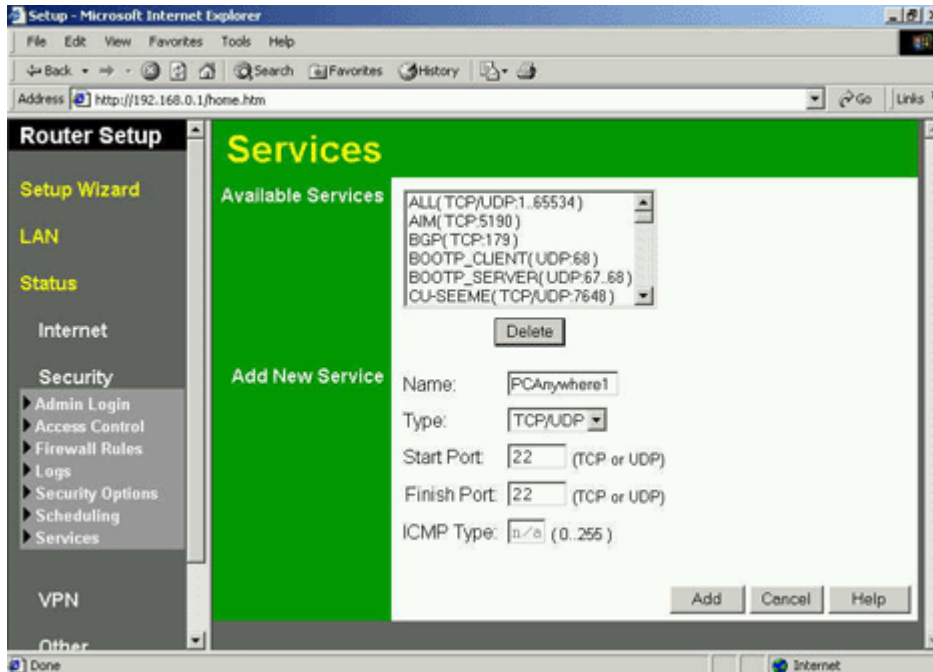
Now enter the ports used by PCAnywhere, so the remote computer on the WAN can access the PC-Anywhere Host system on the LAN.



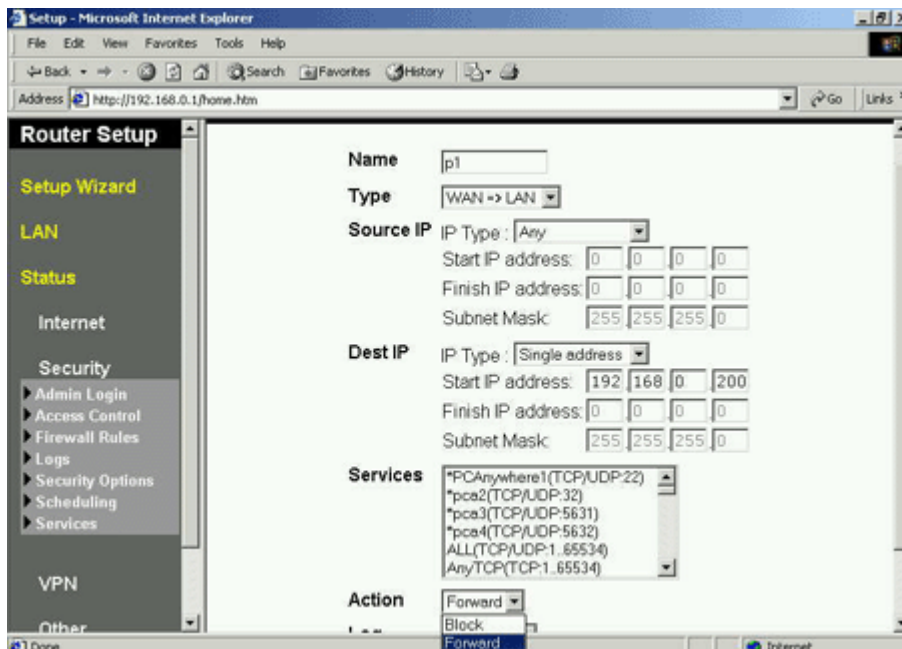
3. Create a new entry for each port required by PCAnywhere.  
 (Note: When selecting the protocol, select "TCP/UDP" and make sure that the port number is defined in both Internal and External port options.)

#### IP505DV Setup

1. Select "Security", and from the submenu got into "Services".  
 Now enter the ports as listed previously.  
 (Note: when doing this you will need to select TCP/UDP in "TYPE" option)
2. Repeat until you have entered all 4 ports used by PCAnywhere.



3. Once the services have been entered, go into "Firewall Rules" and Select "WAN=>LAN".  
 Click on "Add" to create new policies.

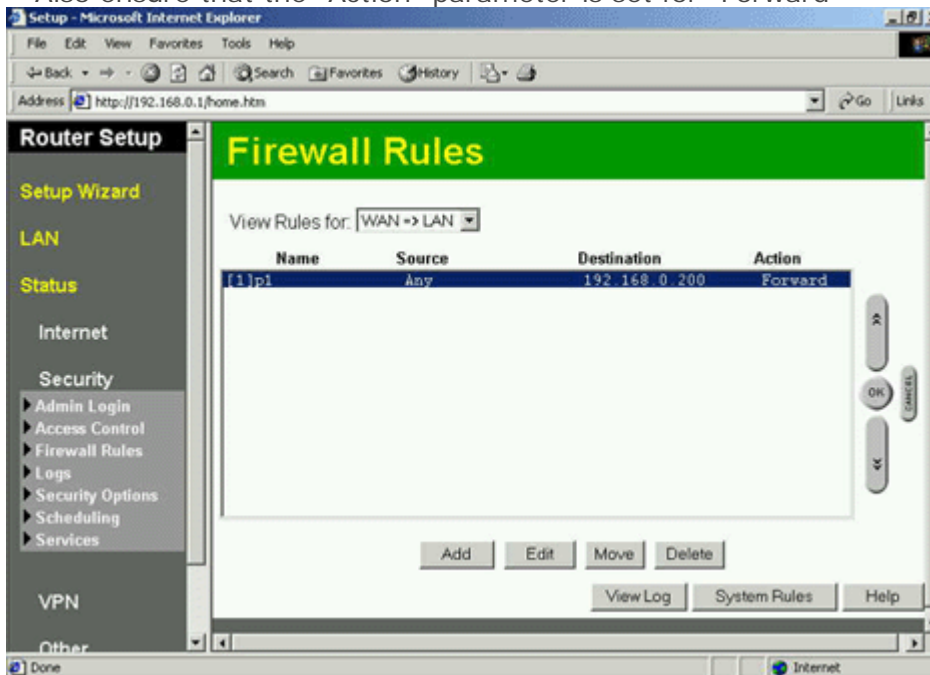


---

4. Create 4 new policies using the previously defined services.

Destination IP address should be the IP address of your PC-Anywhere Host system  
Source IP address should be left as "Any" (The addresses will be greyed out)

Also ensure that the "Action" parameter is set for "Forward"



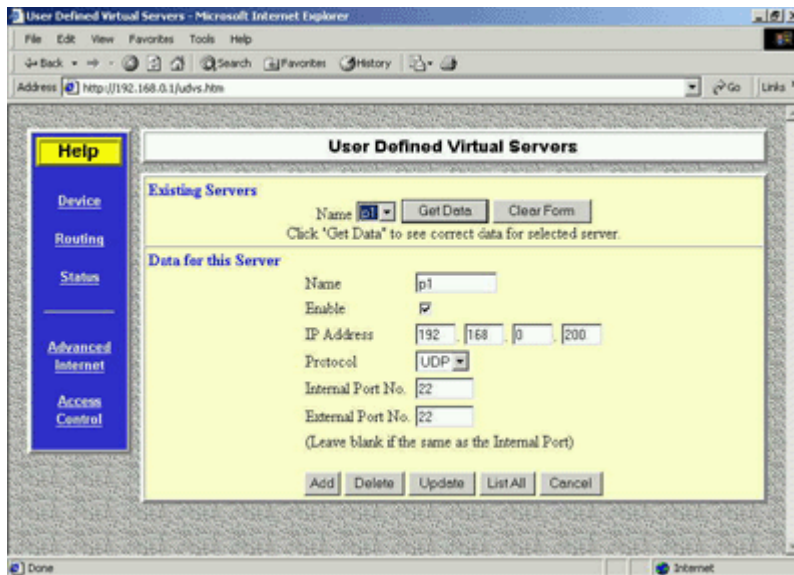
PCAnywhere will now operate through this IP Router

---

---

## IP5020 Setup

1. From the home page, go into Advanced Internet. Then go into User defined Virtual Servers.
2. Here enter the information for each port, and you'll need to create entries for both UDP and TCP for each port.



---

**Summary:**  
(If required)