

ALLOY TECH ARTICLE

Date: 14/11/2007
Revision Date (6 months max): N/A

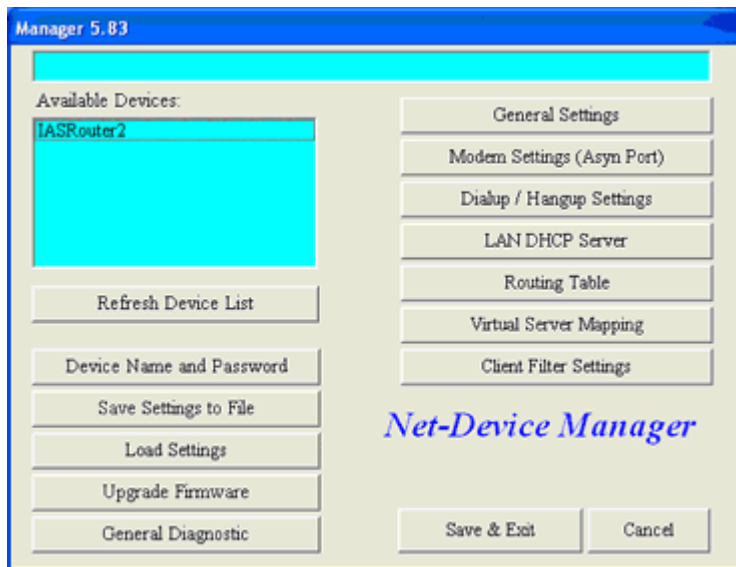
Topic / Issue: Problems Saving Configuration with the IPS5200V2

Written By: Scott Young

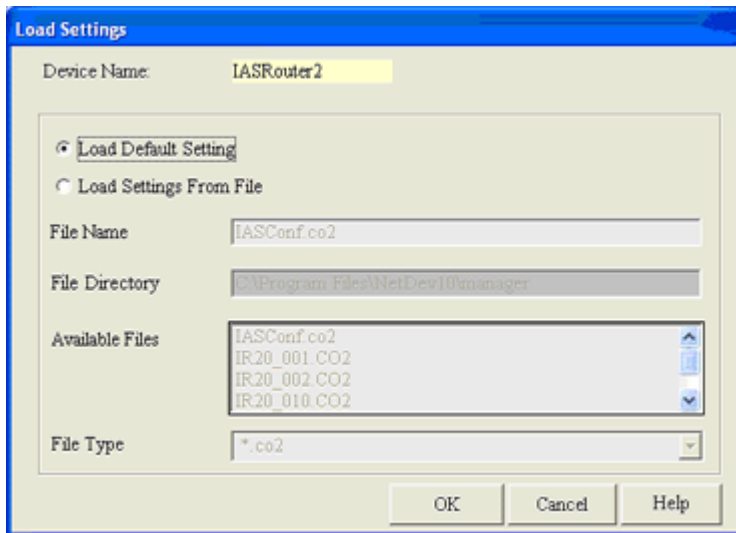
How to overcome problems when trying to save the configuration of the IPS5200

If you experience problems when trying to save the configuration of the IPS5200V2 using the NET DEVICE MANAGER you made need to load the default settings and start the configuration process again.

To load the default settings run the Net Device Manager and select your device from the Available Device's List, as shown below:



Select Load Settings from the list on the left hand side.
Now select the Load Default Settings radio button and click the OK button as shown below:



You can now restart your configuration process of the IPS5200V2.

Summary:
(If required)