
Topic / Issue: Resetting and Reloading firmware on Access Point- GL2422AP-S

Written By: Scott Young

Reloading firmware through the web browser after Access Point has been reset.

When resetting the AP, you will need to have the firmware handy if you are attempting to get into it via the web browser.

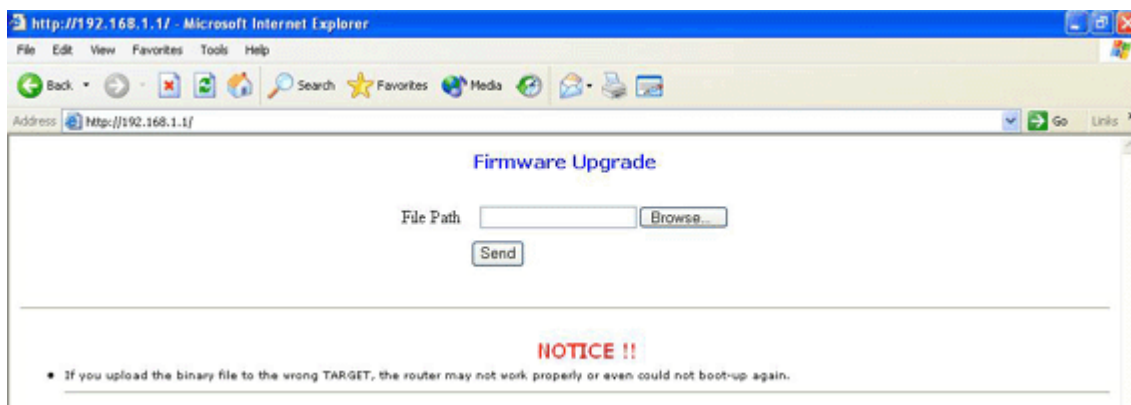
(NOTE: The Access Point Utility will not upgrade the firmware on the AP)

First, here are the steps to reset the AP.

- 1) First power down the AP
- 2) Find something to Hold the reset button down.
- 3) Power AP back up and hold reset button for a few seconds.
(Roughly about 5 to 10 seconds will reset the AP)
- 4) Attempt pinging the default IP address (IP 192.168.1.1), in DOS command line.
(NOTE: IP address of the network card will need to be on the same IP range e.g. 192.168.1.xxx)

Now you should be able to go into Internet Explorer, and go to the management of the AP via it's IP Address.

When you go into Internet Explorer and go to the IP address of the AP, you will recognise that the normal setup screen wont appear.
Instead you will get the following screen below.



Here are the steps to upgrade the firmware.

- 1) If you have the firmware already on your system click on the Browse button, and locate the file.

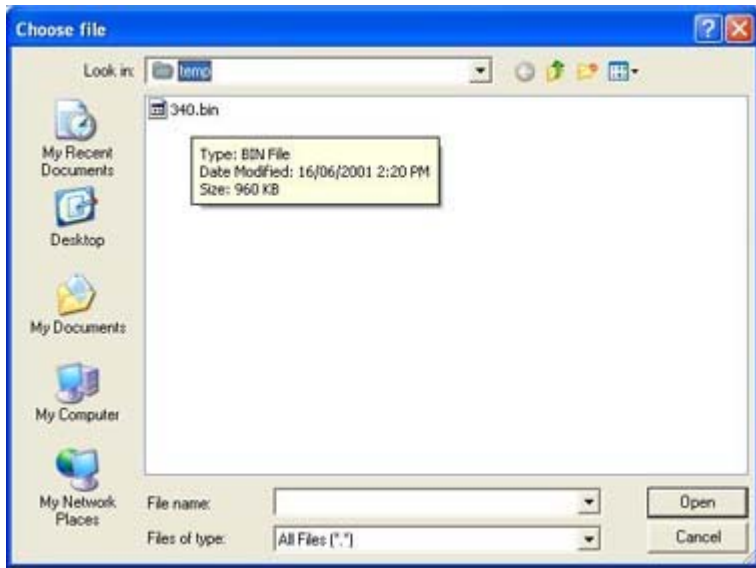
If you don't have the Binary file, here is the link to get it.

<ftp://ftp.alloy.com.au/Wireless/22Mb/GL-2422AP-S/Firmware/>

(NOTE: Be sure to get the firmware that you had before, or the latest firmware. If you get the latest firmware

you will need the latest drivers for you wireless cards)

Once you have the binary file saved to your computer, go back to the AP in Internet Explorer and click on Browse



2) Once you have found the file, you should be back at the upgrade screen. It should have the path of where the firmware file is located. If it does and is correct, click on Send.

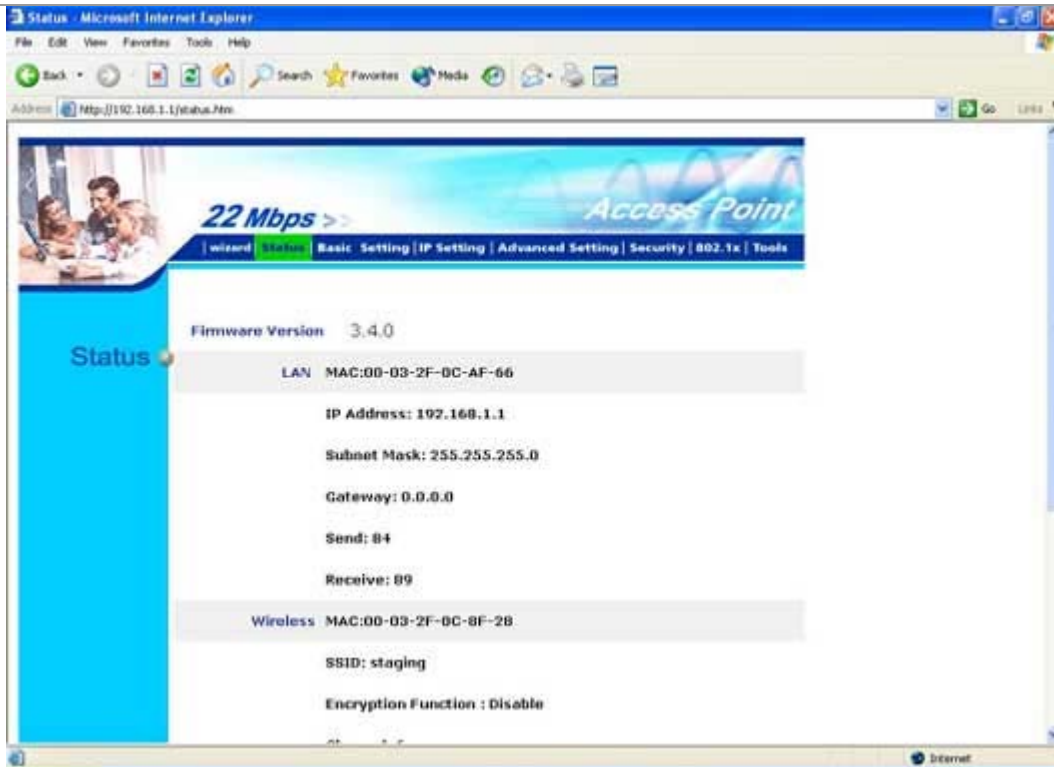


3) Once the firmware is uploaded to the AP, a screen will appear saying "Settings saved successfully".

Click on the Back link. You will go back to the firmware upgrade page.

4) Click the refresh button on Internet Explorer. This will give you the normal setup information for the AP.

Looks as follows:



The Access Point is now on default settings and can now be reconfigured.

Summary:
(If required)