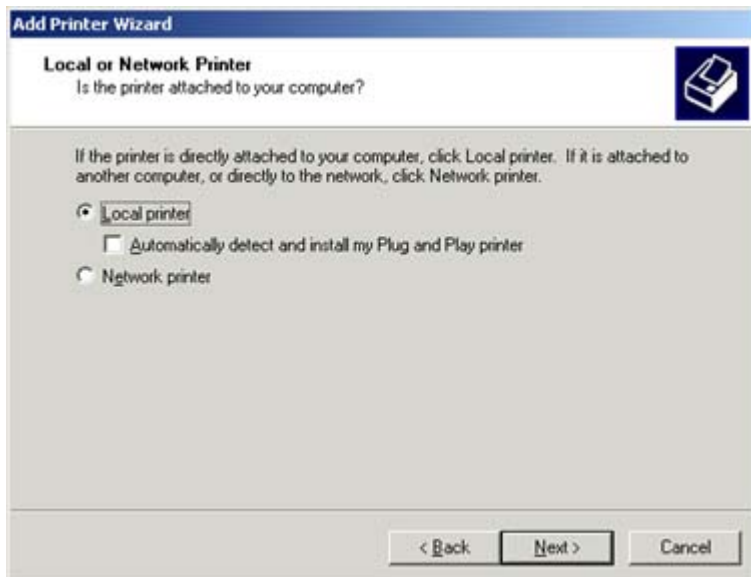

Topic / Issue: Windows 2000 LPR print server configuration instructions

Written By: Scott Young

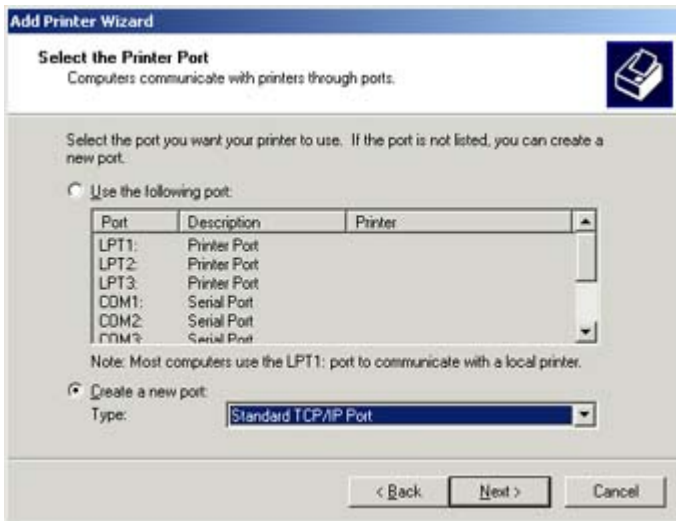
The following page describes how you would set up your Windows 2000 PC to print to printers attached to an Alloy Print Server over TCP/IP (LPR).

The print server that you are going to print through should already be configured and running on your network.

1. Click on Start Button - Printers
2. Double click on the Add Printer icon
This brings up the Add Printer Wizard
Click next
3. You can now select to install a local or network printer as shown below
Select a local printer, then click next

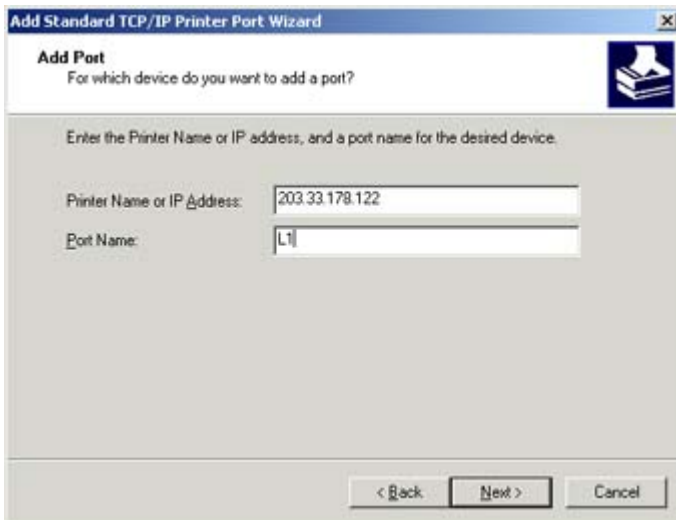


4. You now need to select which port your printer is connected to
Your printer is not connected to any of the specified ports, so you will have to create a port
Click on create a new port and select Standard TCP/IP port, then click next

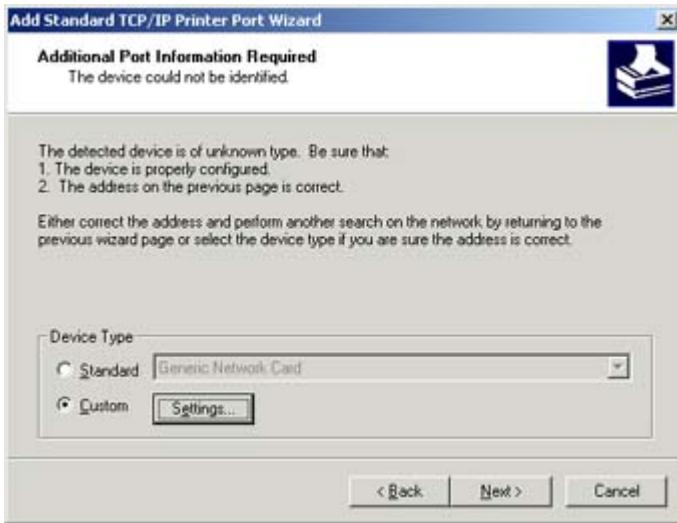


5. The Add Standard TCP/IP Port Wizard appears
Click next

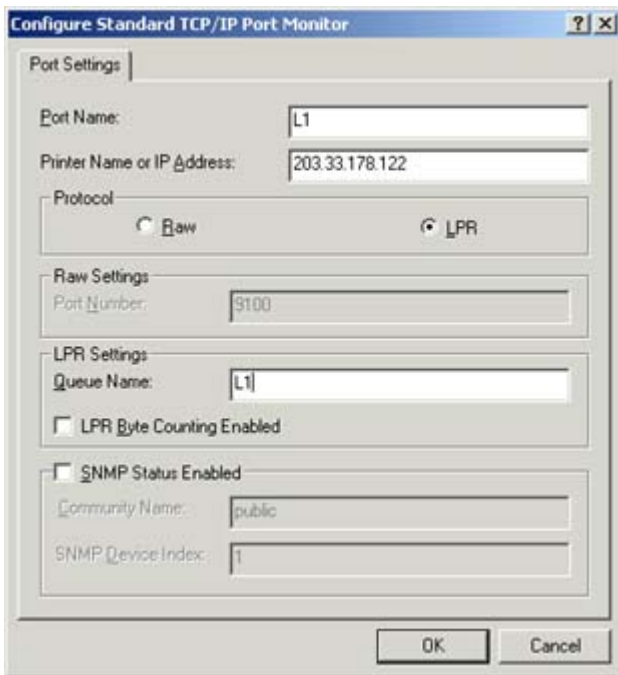
6. You now have to enter the IP address of the print server and the port name
The port name is usually L1 depending on what port your printer is plugged into on the print server. (L1 = Logical Port 1 of Print server)
If it's plugged into port 1 then the port name will be L1



7. It will now tell you that it could not find the device you are looking for. Under Device Type, select Custom and click on Settings



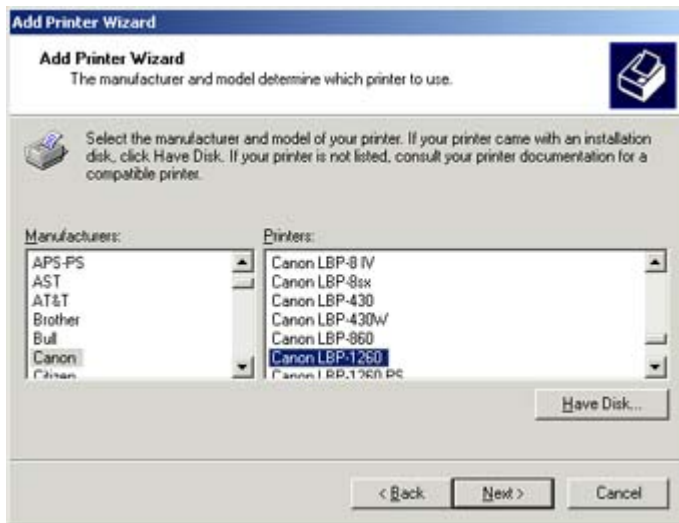
8. You will now need to select the protocol that you are using. Click on LPR and then in LPR Settings, select the same queue name as your port name then click OK
It will take you back to the previous screen and then you click next



9. It will then give you a summary screen showing the settings you have selected
You can now click Finish



10. The Add Printer Wizard will now appear, click next.
You will now have to select the printer that is connected to your print server
Click next



11. You will now be prompted to give your printer a name and select whether you want to use this as your default printer.

Enter own preference and click next

12. You can now select whether you want to share this printer

Again this is up to you, click next

13. Select whether you want to print a test page

This is recommended, click next.

14. The installation of your printer is complete, now click finish

There now should be a printer icon in your printer menu and you are now ready to print

Summary:

(If required)