

Topic / Issue: Windows 2000 2,4 or 8 PORT PCI installation- PC-COM

Written By: Scott Young

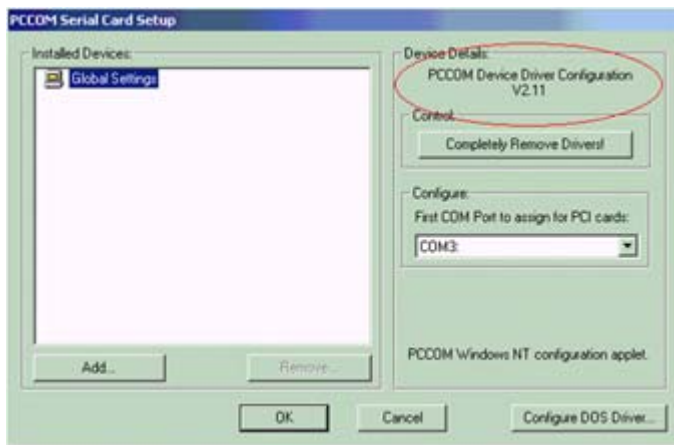
Run the Setup program to install the drivers for OS PNP recognition of the PCCOM cards

If you have the old drivers installed on your computer then please remove these first.

To verify your driver revision open the control panel and select the PCCOM Adaptors.

In the Device Details frame you will see the PCCOM Device Driver Configuration V??.?

Please contact Alloy for the latest drivers.



Shut down your PC and insert the PCCOM Card.
Then turn on your PC back on.

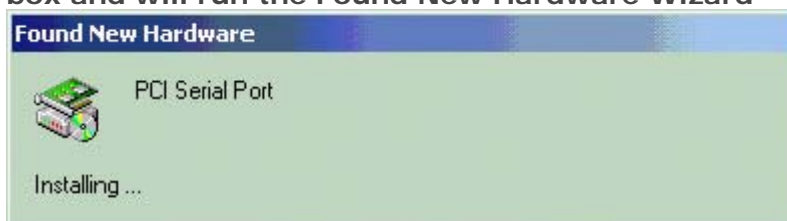
Please note:

PCI cards will be automatically detected when installed into Win2000.

ISA-based cards will require manual configuration using the utility supplied.

Installing PCCOM PCI Card in Windows 2000

When your Win2000 system restarts it will display a Found New Hardware dialog box and will run the Found New Hardware Wizard

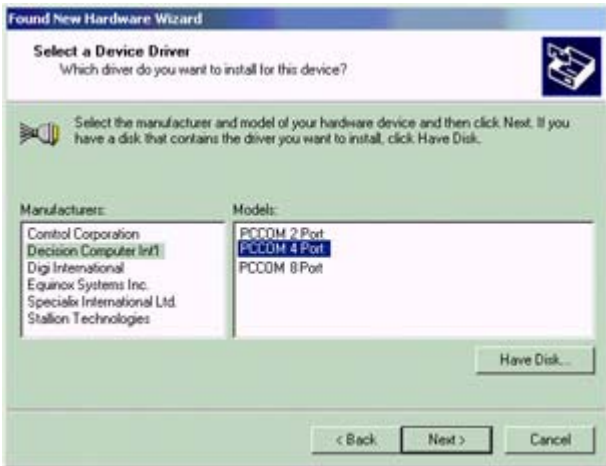


When prompted by the wizard, select Display a list of the known drivers



At the Hardware Type, select Multi-port serial adaptors and then click the Next button

Then select, PCCOM 2,4 or 8 Port card.
Then click the Next button.



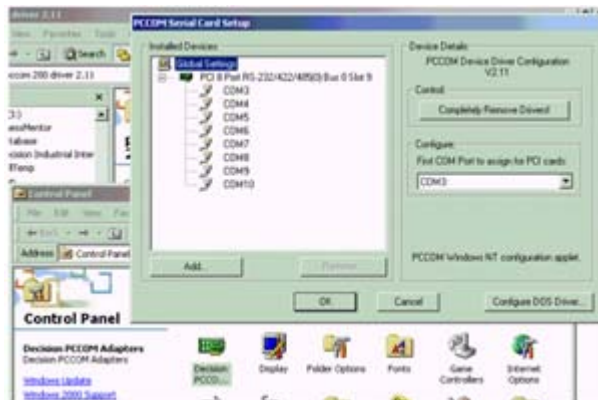
At the Update Driver Warning click the Yes button.



At the Start Device Driver Installation click the Next button.
When the dialog "Digital Signature Not Found" appears, click the Yes button.



At the Completing the Found new Hardware Wizard click the Finish button.
Now that the Installation is complete, you can configure the card via the control panel's new PCCOM object.



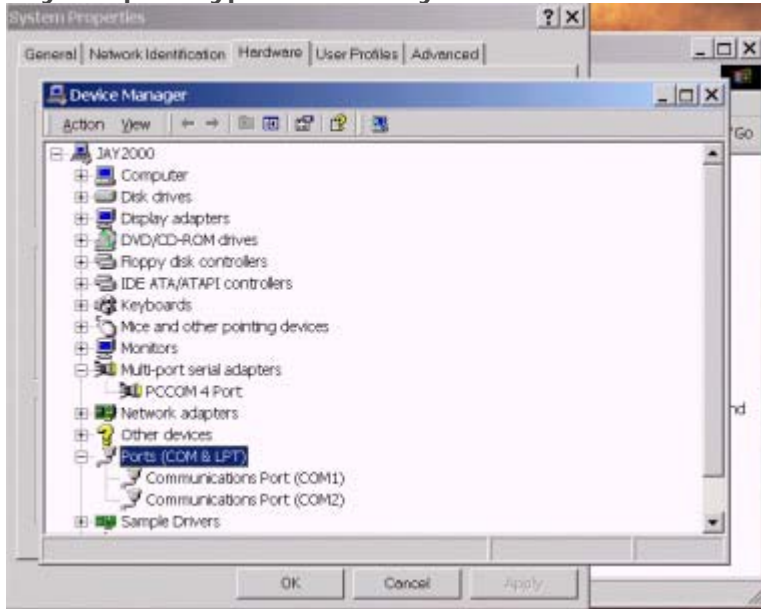
Note: PCCOM PCI 2 Port / 4 Port / 8 Port on Windows 2000

Missing ports

After installation, you will find that the port's are not visible within the Device Manager.

Currently this is normal behaviour, the card will still work.

If you open HyperTerminal you will notice that the ports are available for use.



2/ Conflicts

You may also find that the PCCOM Port Properties indicate a device conflict.

This also is a minor problem, that will not effect card operation, and will be resolved in the near future.

Summary:
(If required)