

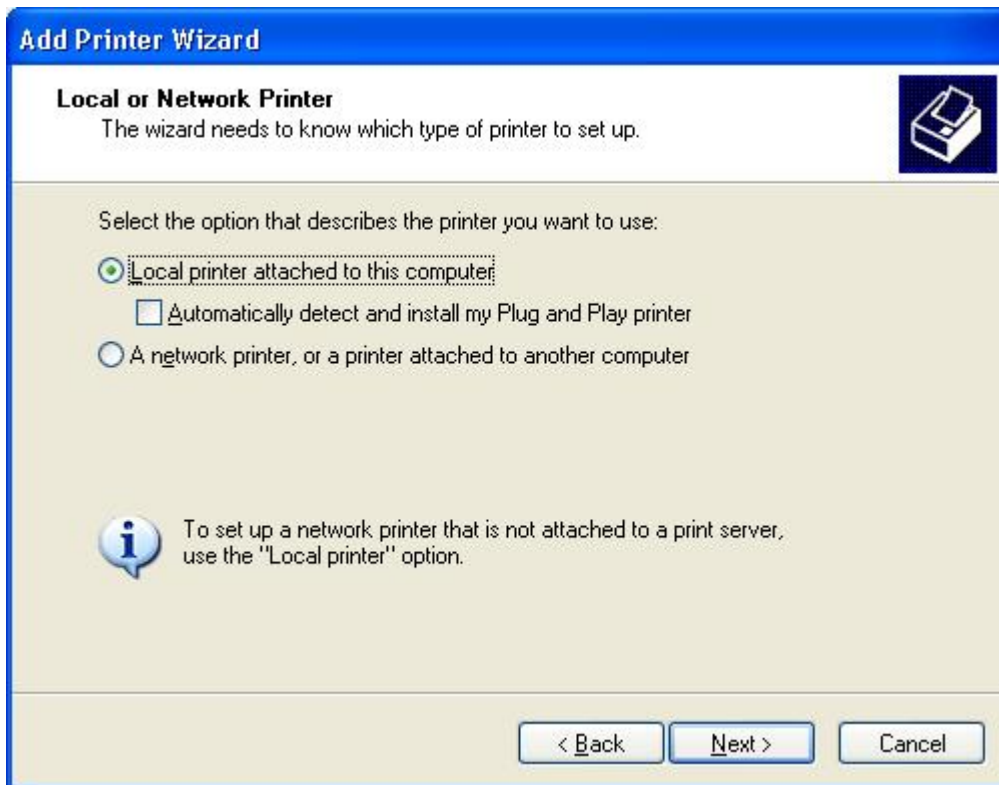
**Topic / Issue:** Windows XP LPR print server configuration instructions

**Written By:** Scott Young

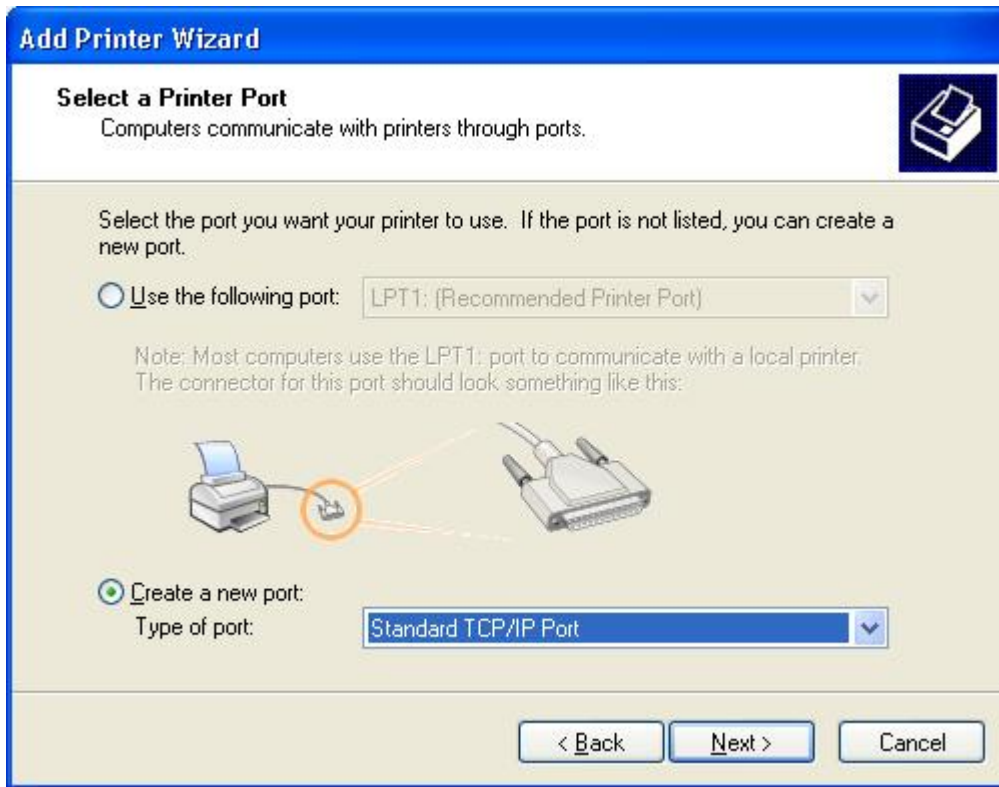
The following page describes how you would set up your Windows XP PC to print to printers attached to an Alloy Print Server over TCP/IP (LPR).

The print server that you are going to print through should already be configured with an IP address on your network, and the printers attached and running.

1. Click on Start Button - Printers and Faxes
2. Double click on the Add Printer icon  
This brings up the Add Printer Wizard - Click next
3. You can now select to install a local or network printer as shown below  
Select a local printer, then click next



- 
4. You now need to select which port your printer is connected to  
If your printer is not connected to any of the specified ports you will have to create a new port  
Click on create a new port and select Standard TCP/IP port, then click next



- 
- The Add Standard TCP/IP Port Wizard appears  
Click next
  - You now have to enter the IP address of the print server and the port name  
The port name can be anything, but is usually configured as IP\_xxx.xxx.xxx.xxx

**Add Standard TCP/IP Printer Port Wizard**

**Add Port**  
For which device do you want to add a port?

Enter the Printer Name or IP address, and a port name for the desired device.

Printer Name or IP Address: 203.33.178.121

Port Name: IP\_203.33.178.121

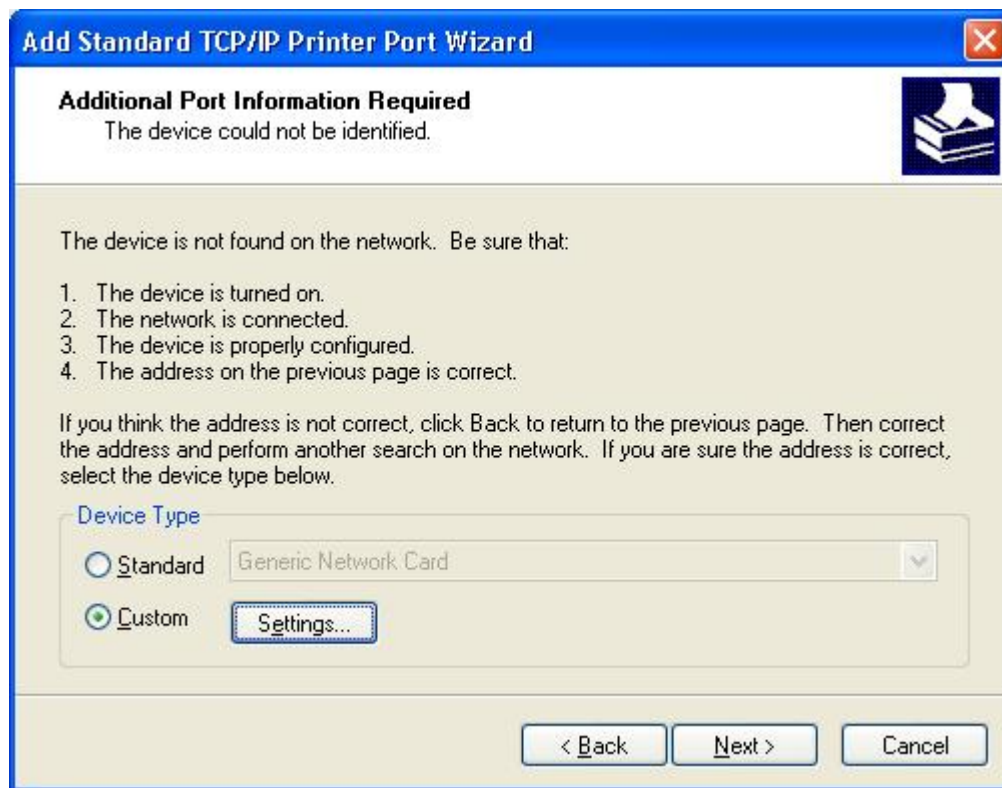
< Back    Next >    Cancel

7. At the next point Windows will attempt to talk with the printer attached to the print server, based on the information provided.

This will fail as the Printer is not directly connected to the OS.

You will need to custom define the connection settings.

Under Device Type, select Custom and click on Settings



---

Now Select the print server port settings:

Under Protocol select LPR

Under the Queue name select L1

(L1 = Logical Port 1 of Print server - Physical port 1)

(L2 = Logical Port 2 of Print server - Physical port 2)

(L3 = Logical Port 3 of Print server - Physical port 3)

If it's plugged into port 1 then the port name will be L1)

**Configure Standard TCP/IP Port Monitor**

Port Settings

Port Name: IP\_203.33.178.121

Printer Name or IP Address: 203.33.178.121

Protocol

Raw  LPR

Raw Settings

Port Number: 9100

LPR Settings

Queue Name: L1

LPR Byte Counting Enabled

SNMP Status Enabled

Community Name: public

SNMP Device Index: 1

OK Cancel

8. The final step is to match the correct print driver to the print server port that was just defined.  
The Add Printer Wizard will now appear, click next.  
Select the printer that is connected to your print server



The installation of your printer is complete!!!!

---

**Summary:**  
(If required)