



TECH ARTICLE

Date: 13/11/2007

Revision Date (6 months max): N/A

Topic / Issue: Windows XP WPA-PSK Support for the WLT245401/VP

Written By: Scott Young

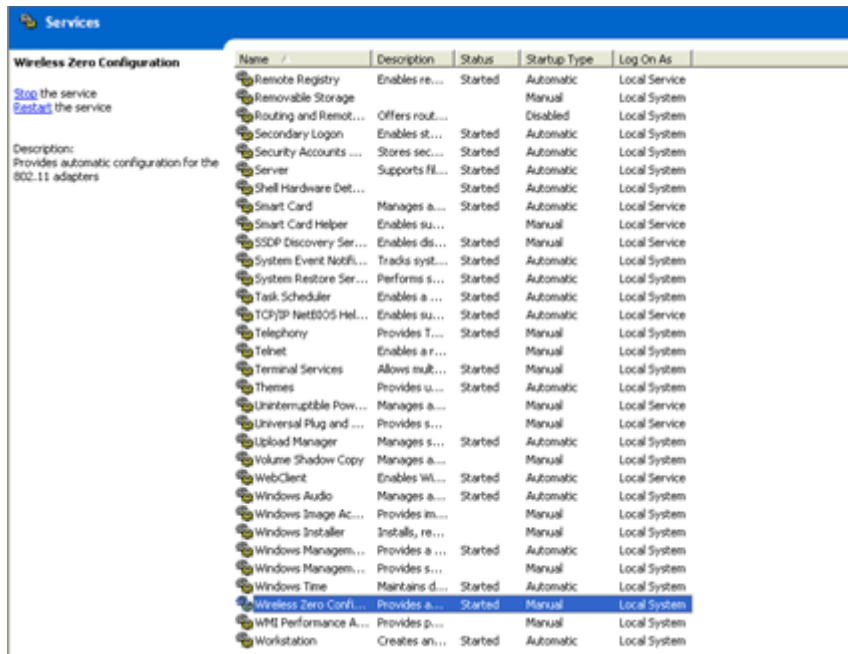
Windows XP patch to allow WPA-PSK support for the WLT245401/VP.

To enable WPA functionality on the WLT245401/VP you will need to install the following Windows XP Patch. [Click here to download patch](#)

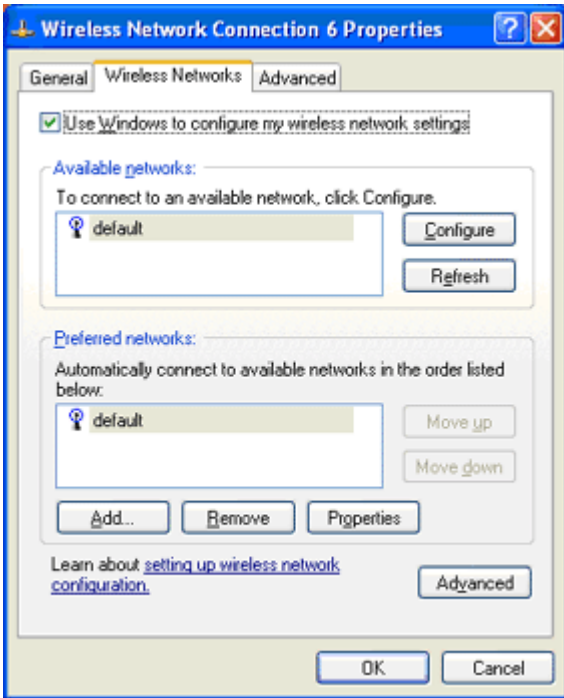
You will also need to ensure that you are running driver version 1.2 or later for the WLT245401/VP. [Click here to download driver](#)

- 1) Install the Windows XP patch onto your computer, you will need to have Windows XP SP1 or later to install this patch.
- 2) Once the patch has been installed, run the setup to install the driver files.
- 3) Shutdown your computer and insert the wireless card. Restart your computer and the wireless card should install automatically.
- 4) Now you need to make sure that you have the built in wireless support for Windows XP enabled.

The Windows XP wireless support runs as a service, right click my computer and select manage. Select Services and ensure that the "**Wireless Zero Configuration**" is running. If it's not please right click on the service and select **Start**.

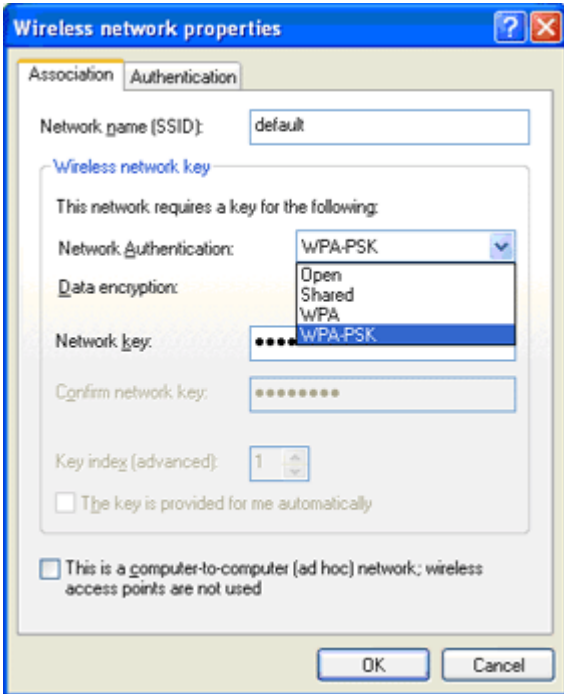


5) Now you will need to enable windows to configure your wireless network, right click on **My Network Places** and select properties. Right click on your wireless adapter and select properties. Here you will have three tabs at the top General, Wireless and Advanced. Select Wireless and check the tick box next to "**Use Windows to configure my wireless network settings**".



6) Highlight your desired network in the list and select configure. Under **Network Authentication** select WPA-PSK from the list.

7) Enter an appropriate Key in to the **Network Key** field and click OK.



You should now be able to connect to your wireless Access Point securely using WPA.

Summary:
(If required)