

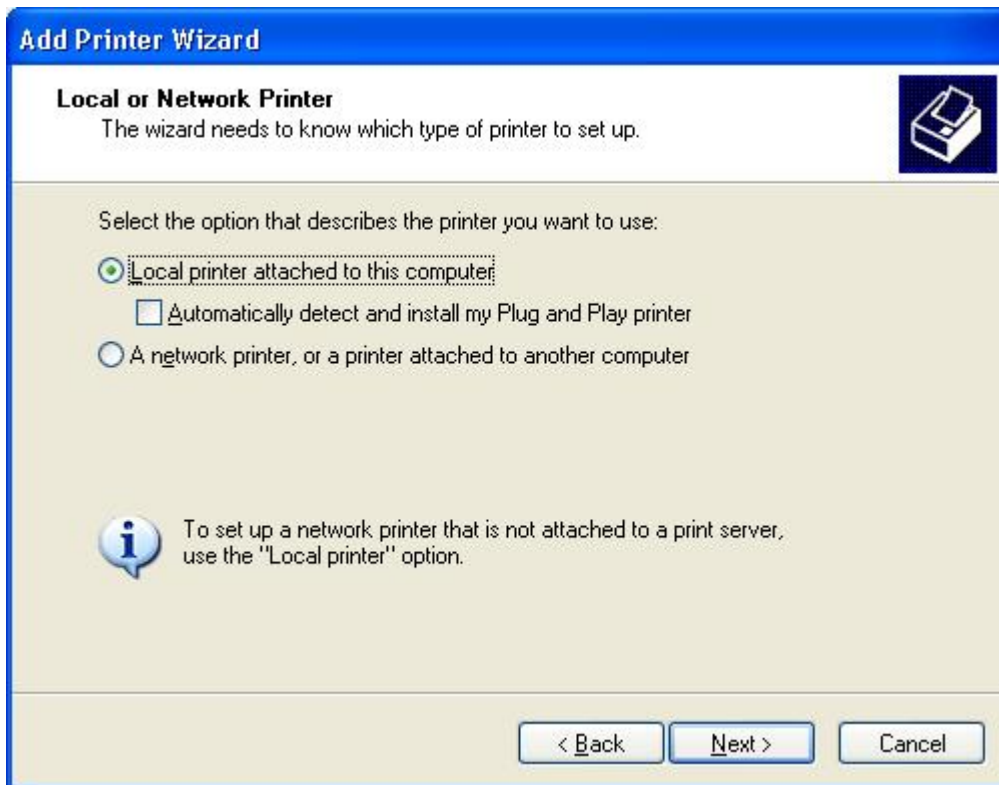
Topic / Issue: Windows XP printing to IP515LM Printer Port

Written By: Scott Young

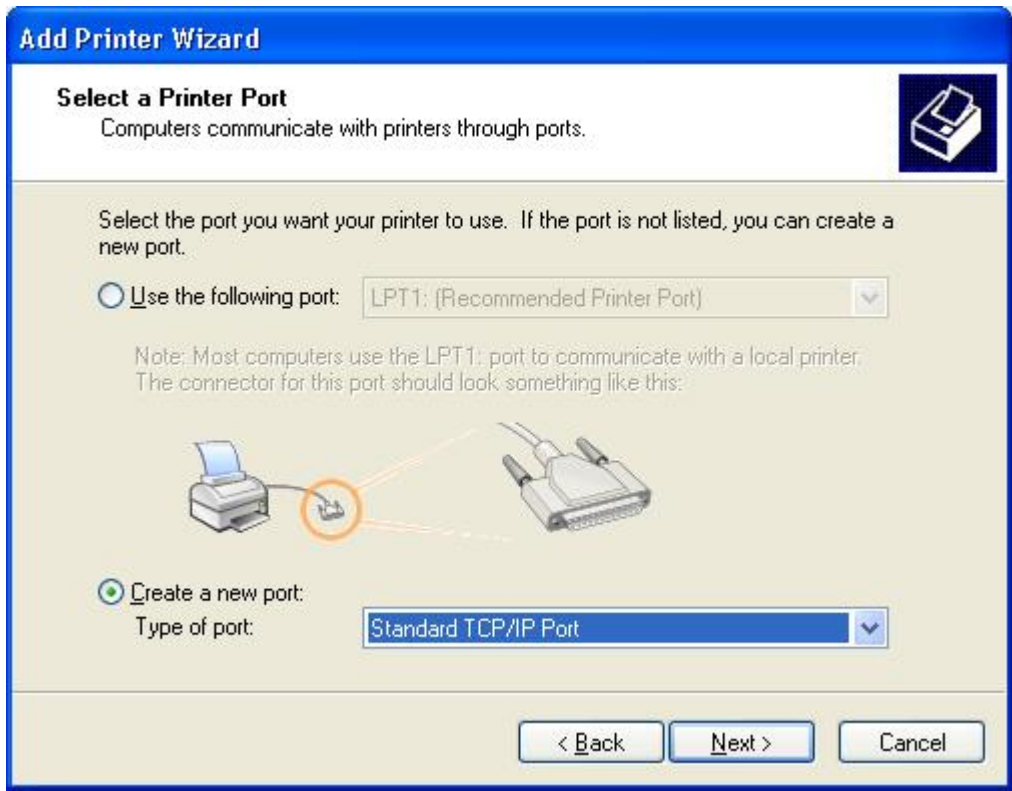
The following page describes how you would set up your Windows XP PC to print to printers attached to an Alloy IP515LM Print Server over TCP/IP (LPR).

The print server that you are going to print through should already be configured with an IP address on your network, and the printers attached and running.

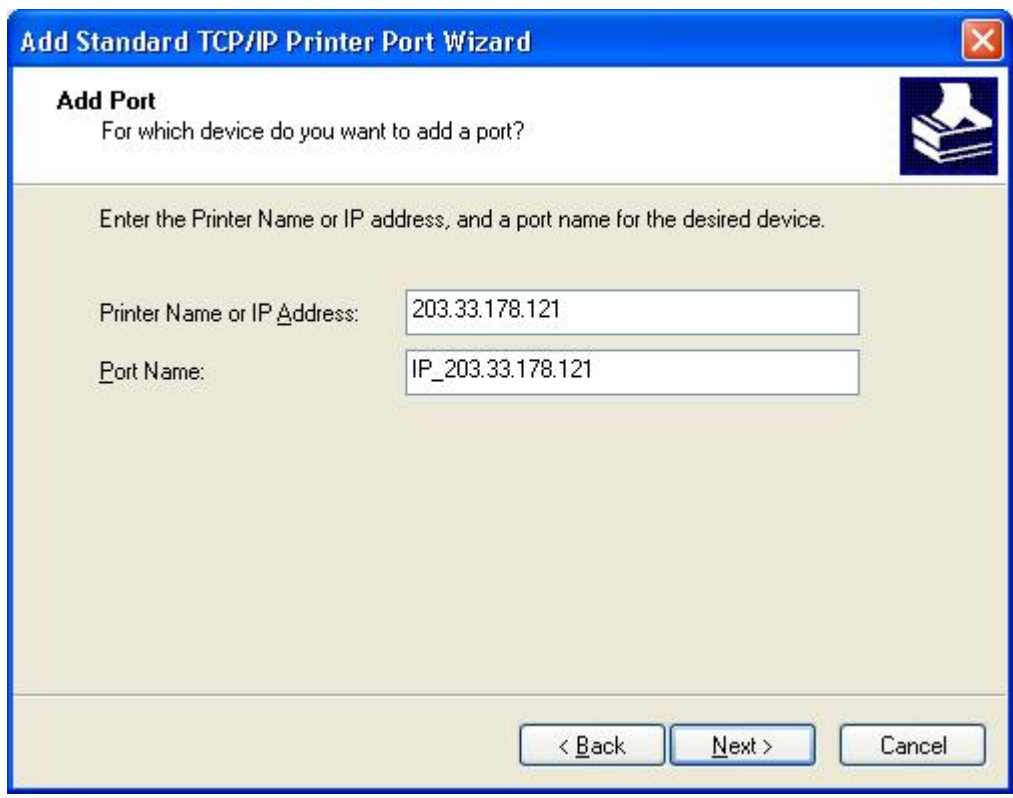
1. Click on Start Button - Printers and Faxes
2. Double click on the Add Printer icon
This brings up the Add Printer Wizard - Click next
3. You can now select to install a local or network printer as shown below
Select a local printer, then click next



-
4. You now need to select which port your printer is connected to
If your printer is not connected to any of the specified ports you will have to create a new port
Click on create a new port and select Standard TCP/IP port, then click next



-
- The Add Standard TCP/IP Port Wizard appears
Click next
 - You now have to enter the IP address of the print server and the port name
The port name can be anything, but is usually configured as IP_xxx.xxx.xxx.xxx

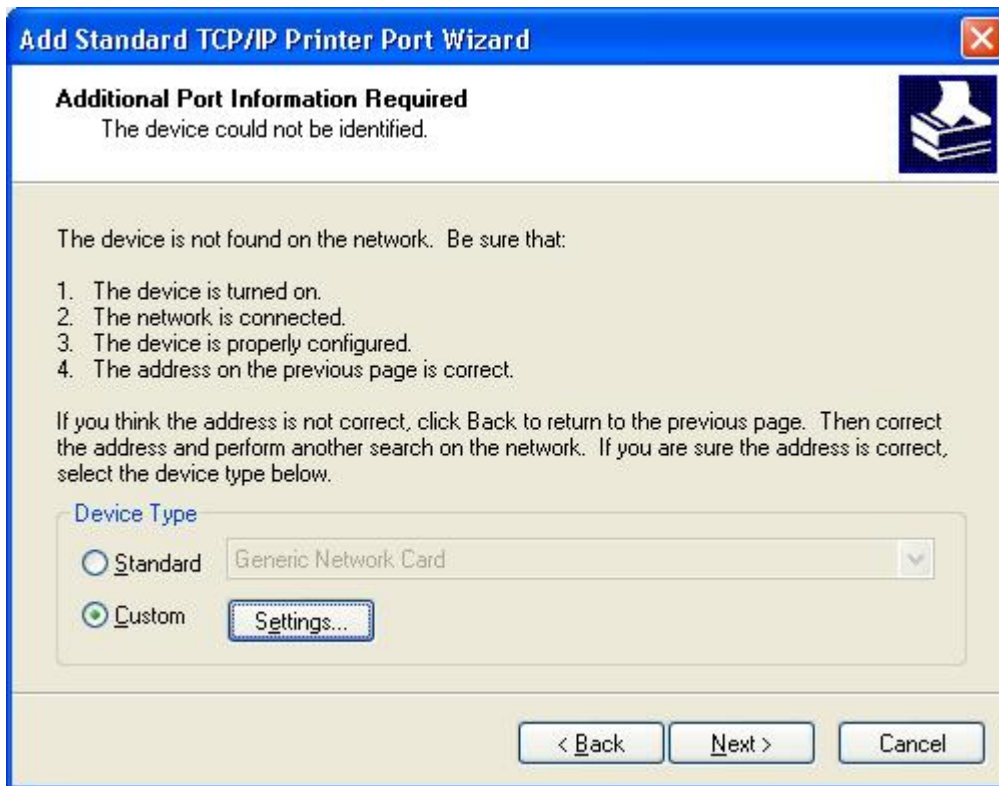


7. At the next point Windows will attempt to talk with the printer attached to the print server, based on the information provided.

This will fail as the Printer is not directly connected to the OS.

You will need to custom define the connection settings.

Under Device Type, select Custom and click on Settings



Now Select the print server port settings:
Under Protocol select LPR
Under the Queue name select L1
(L1 = Logical Port 1 of Print server - Physical port 1)

Configure Standard TCP/IP Port Monitor

Port Settings

Port Name: IP_203.33.178.121

Printer Name or IP Address: 203.33.178.121

Protocol

Raw LPR

Raw Settings

Port Number: 9100

LPR Settings

Queue Name: L1

LPR Byte Counting Enabled

SNMP Status Enabled

Community Name: public

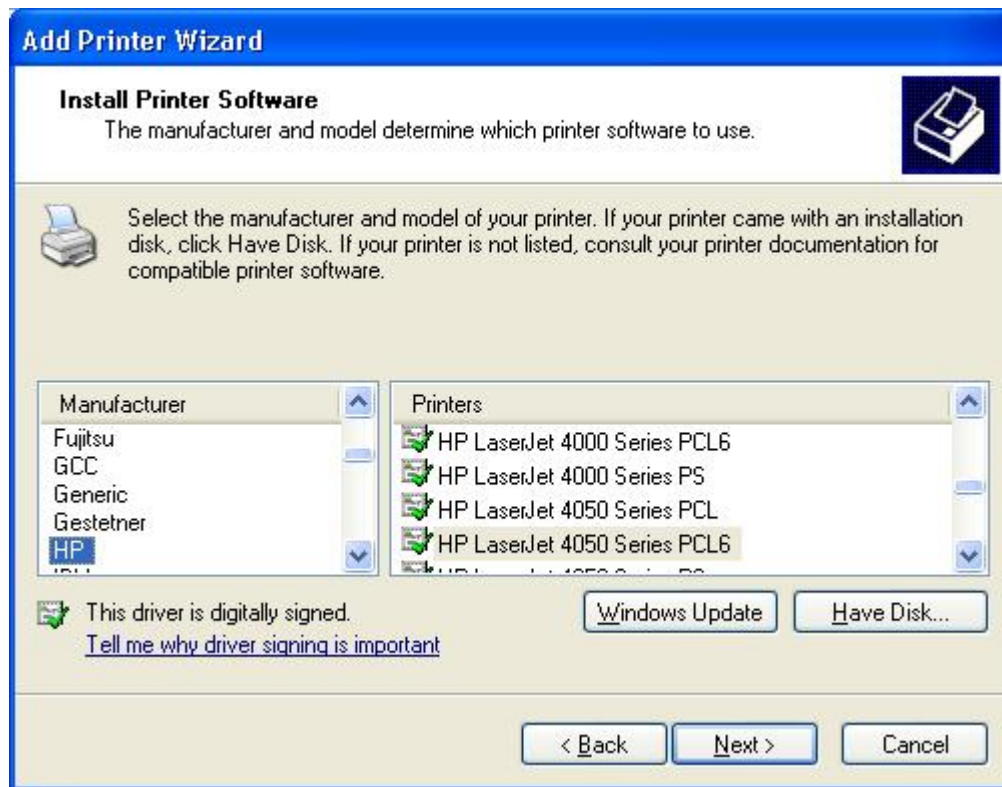
SNMP Device Index: 1

OK Cancel

8. The final step is to match the correct print driver to the print server port that was just defined.

The Add Printer Wizard will now appear, click next.

Select the printer that is connected to your print server



The installation of your printer is complete!!!!

Summary:
(If required)