

Software Suite for RFC-2285 / RFC-2889 Compliance Tests

FEATURES SUMMARY

- Supports up to 1024 ports and 256 addresses per port
- Generates graphical results that can be exported to HTML
- Includes profile and search mode for frame rates
- Supports multi-user operation
- Supports multiple 10/100/1000 Mbps Ethernet card modules (within the same test)
- Contains an email option upon test completion
- Supports port mirroring and flooding detection
- Supports Ethernet II and IEEE 802.3 Ethernet frame types
- Supports auto-negotiation and flow control
- Contains user-configurable test duration, frame size, and frame rate
- Supports VLANs
- Contains a built-in interframe gap calculator

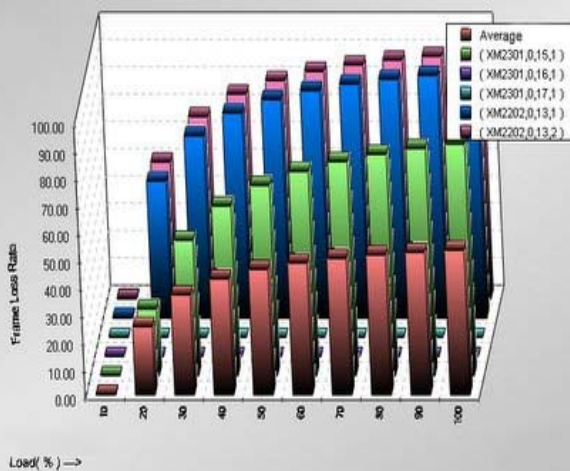
MAJOR BENEFITS

- Generates full and sustainable load for accurate evaluation of the performance limits of a DUT (Device Under Test) and/or a SUT (System Under Test)
- Comprehensive testing in multi-topology environments for Ethernet (10/100/1000Mbps)
- Real time display of test results
- Various types of report formats, including MS-Excel and HTML
- Generates error log for debugging
- User selectable tabular or non-tabular report format for on-screen display of test results
- Provides 3D chart reports

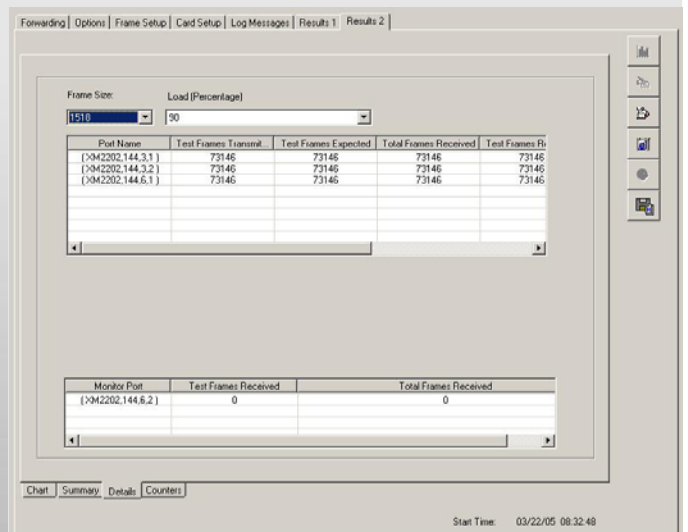
KEY APPLICATIONS

- Analysis of the Layer-2 performances of Error Filtering, Forwarding, Address Learning, Address Caching, Broadcast Forwarding, Broadcast Latency, Congestion Control, and Forward Pressure of a switch

Sample Screen Shots



Test Result Chart



The screenshot shows the software interface with a menu bar (Forwarding, Options, Frame Setup, Card Setup, Log Messages, Results 1, Results 2) and a toolbar. The main window displays a table with the following data:

Post Name	Test Frames Transm.	Test Frames Expected	Total Frames Received	Test Frames Rb
(XM2202,144,3,1)	73146	73146	73146	73146
(XM2202,144,3,2)	73146	73146	73146	73146
(XM2202,144,5,1)	73146	73146	73146	73146

Below the main table, there is a 'Monitor Post' section with a table:

Monitor Post	Test Frames Received	Total Frames Received
(XM2202,144,6,2)	0	0

The interface also includes a 'Start Time' field showing 03/22/05 08:32:48 and a bottom menu bar with 'Chart', 'Summary', 'Details', and 'Counters'.

Detailed Result Table

OVERVIEW

REQUIREMENTS

Testing Platform	NuStreams-2000/600 chassis with the appropriate NuStreams test modules
Operating System	Microsoft Window 2000 or Windows XP
PC and Peripherals	An IBM or compatible Pentium III or above PC with at least 256MB of RAM, 10GB of available hard disk space, keyboard, mouse, color monitor, and a 10/100Mbps Ethernet controller card (in the PC)
Cabling	Use appropriate cables (for example, category 5e, straight-through or crossover, depending on the DUT) to connect the NuStreams test modules with the DUT and the NuStreams chassis with the PC.

NuApps-2889 is designed to determine the performance of L2 DUT. It is fully automated and scalable, contains an enhanced GUI with real-time graphing, and supports NuStreams-600/2000 chassis. NuApps-2889 is based on RFC 2285, Benchmarking Terminology for LAN Switching Devices, and RFC 2889, Benchmarking Methodology for LAN Switching Devices. It is considered the TRUE first-level benchmark for all switches.

Forwarding

Determines the forwarding performance of the DUT, as well as the device's frame loss, frame rate, throughput, and supports full-mesh, partial mesh, and non-mesh traffic patterns.



Full Mesh Forwarding Option

Congestion Control

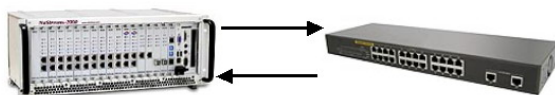
Determines the effect of a congested port on a non-congested port, otherwise known as Head of Line Blocking, and measures and graphs the frame loss and frame rate of non-congested and congested ports.



Congestion Control

Address Learning

Determines the rate at which a DUT can learn addresses without flooding, and measures the percentage of learned frames at the rate which all addresses are learned.



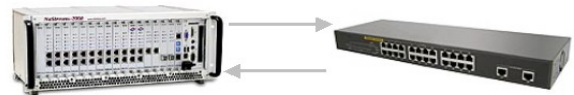
Address Learning / Caching

Address Caching

Determines the address caching capacity and measures the percentage of addresses learned at a given rate.

Error Filtering

Determines the DUT's ability to handle errors, including CRC, oversized, undersized, VLAN oversized, alignment, and dribble bit errors.



Error Filtering

Broadcast Forwarding

Determines the DUT's ability to forward broadcast traffic by measuring frame loss and throughput. Users can set up multiple source ports, receiver ports, and monitor ports.



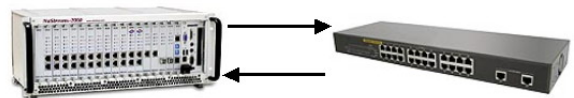
Broadcast Forwarding/Latency

Broadcast Latency

Determines the latency of the broadcast traffic. Users can set up only one source port but can assign multiple receiver ports.

Forward Pressure

Determines the device's ability to handle forward pressure, and measures the number of frames received versus the number of frames expected.



Forwarding Pressure

Proudly distributed in Australia by



www.alloy.com.au

Melbourne

4/585 Blackburn Road
Notting Hill, VIC 3168
Tel: (03) 8562 9000
Fax: (03) 9561 7412

sales@alloy.com.au

Sydney

99 Baxter Road
Mascot, NSW 2020
Tel: (02) 8080 9600
Fax: (02) 8080 9602

Canberra

2/42 Geils Court
Deakin, ACT 2600
Tel: (02) 6291 4922
Fax: (02) 6291 8100

FREEcall 1800 817 807