



Yealink Network Technology CO., LTD

Yealink VC Series Video Conferencing System Quick Start Guide(V10.5)

VC400: Applies to firmware version 30.10.0.5 or later

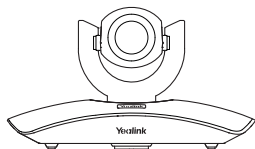
VC120: Applies to firmware version 40.10.0.5 or later

Table of Contents

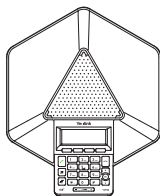
Packaging Contents	1
Connections	2
Remote Control and Cable Ties Installation	3
Bracket and Camera Installation	4

Main Screen	6
Network Deployment	7
Troubleshooting	10

Packaging Contents



VCC18 Camera



VCP40 Video Conferencing Phone



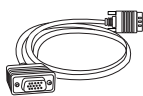
VC400/VC120 Codec



VCR10 Remote Control



DVI Cable



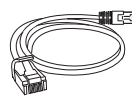
VGA Cable



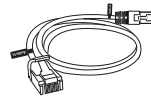
VC400: HDMI Cable x2
VC120: HDMI Cable x1



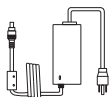
VC400: 3.5mm Audio Cable x1
VC120: None



Ethernet Cable
(2m)



Ethernet Cable
(7.5m)



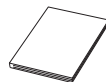
Power Adapter



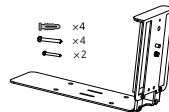
AAA Batteries x2



Cable Ties x7



Quick Start Guide



Camera Wall Mount Accessories

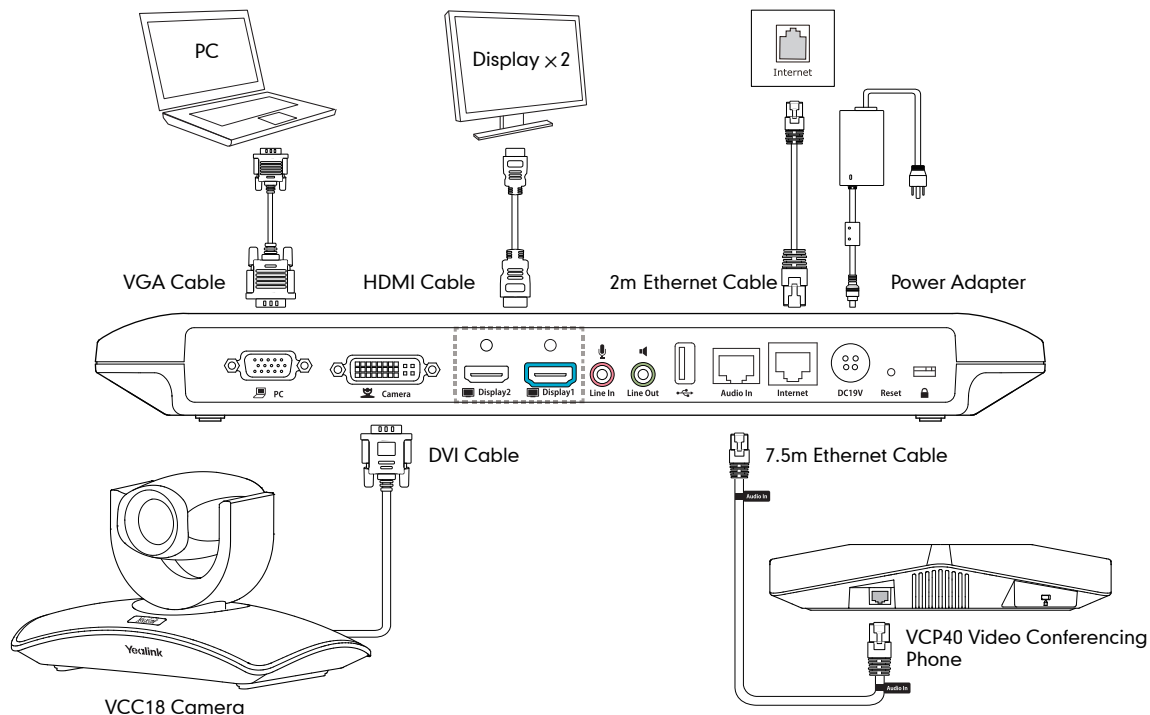


Optional Accessories



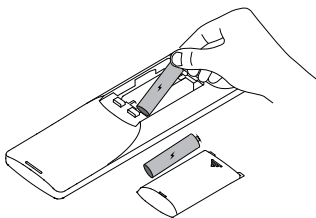
Please use the Yealink-customized DVI cable

Connections

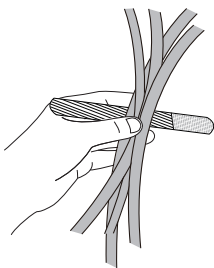
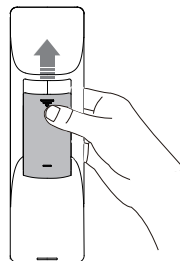


💡 Please do connect to Display1 port if you have only one display device

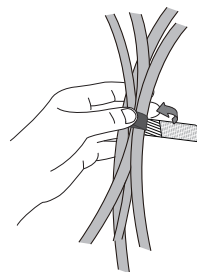
Remote Control and Cable Ties Installation



Install batteries



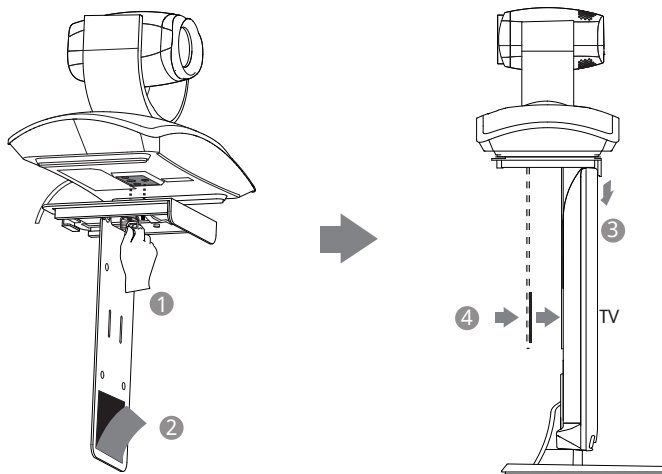
Fasten the cables with the cable tie



Bracket and Camera Installation

- Hanging Mode

Please chose the following installation mode when the thinckness of the TV is less than 120mm

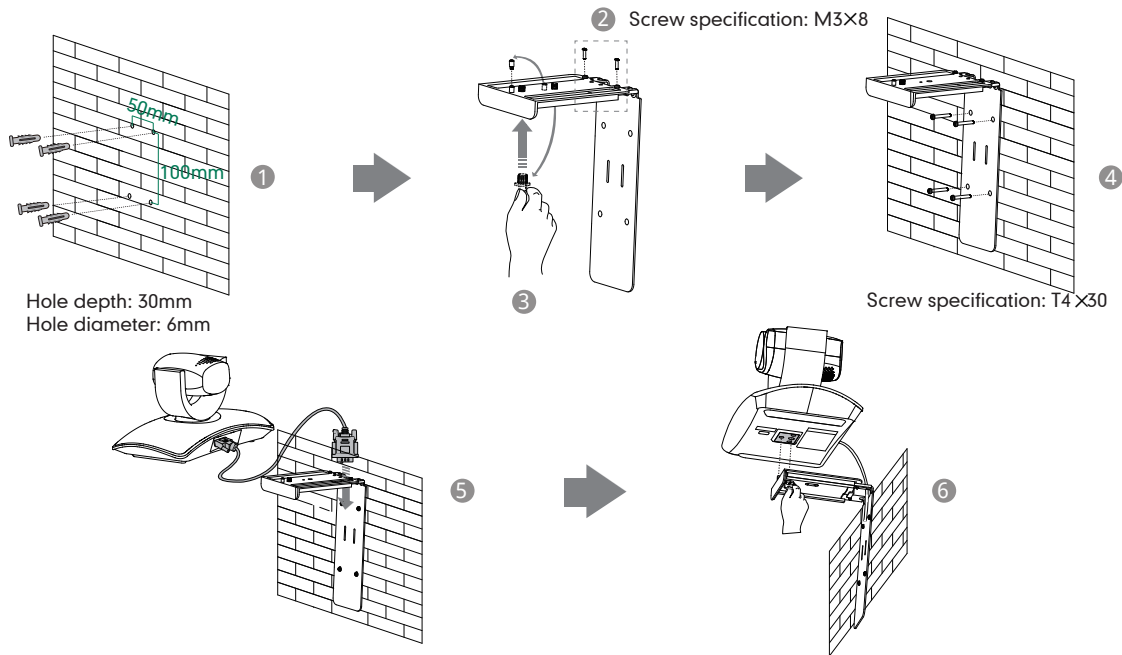


Steps to hang the camera: ① Lock the Camera ② Tear the Tape ③ Install the Bracket ④ Adjust the Bracket



Make sure that the bracket is completely pasted to the back of the TV

● Wall Mount Method

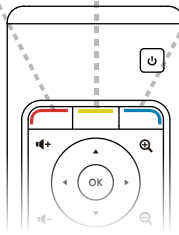


- Steps: ① Punch holes & Insert expansion bolts ② Lock the bracket with screws ③ Move the setscrews to the left holes, and then manually tighten the screws ④ Lock the bracket to the wall with screws ⑤ Connect DVI cable ⑥ Lock the camera



The recommended height for camera positioning is 1.5m-1.8m

Main Screen



Network Deployment

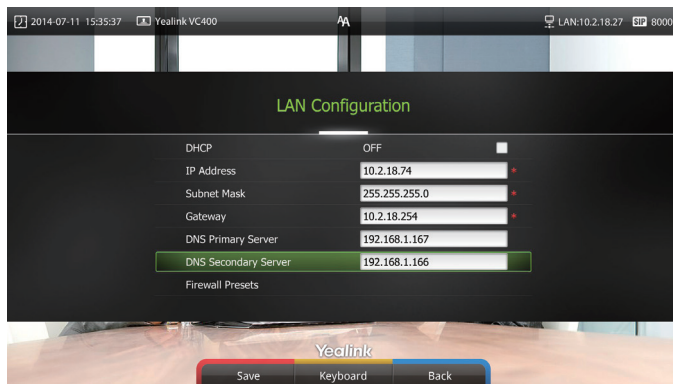
- In order to ensure that the VC400/VC120 can work properly, please configure it according to the role it plays in the conference. If it is in the head office, please make sure that it is reachable from the public network. If it is in the branch office, please use intelligent firewall to deploy it or just follow the same steps as in the head office

Head Office

- At least one static public IP address is required in head office to allow branch offices to connect. The recommended system configurations are as follows :
 - Deploy VCS on public network, you need to assign a static public IP address to VCS.
 - Deploy VCS in Intranet, you need to assign a static private IP address behind the firewall to VCS. At the meantime, do port mapping on firewall for VC400/VC120.

Configure a Static IP

- First of all, configure a static IP for the VC400/VC120
- For example: you can use the remote control to configure the IP 10.2.18.74 to your VC400/VC120.
 - Menu->Advanced (Admin Password:0000)->LAN Configuration
 - Turn off the **【DHCP】**
 - Enter the IP Address, Subnet Mask, Gateway, DNS information in corresponding fields.



- Press **【Save】** to save the configuration, then the screen prompts **【Reboot now】** . Press **【OK】** to reboot the system.

Configure Port Mapping

If the VCS is deployed in Intranet, you need to finish the following port mapping on the firewall:

Function	Port	Protocol Type
H.323 signal port	1720	TCP
Audio & Video media stream port	50000-50499	TCP/UDP
Web management port (optional)	443	TCP
SIP (optional)	5060	TCP/UDP

Branch Office

- If you are in branch office, following two options are suggested:

Option1: Deploy the VCS following the same steps as in the head office. In this way, both inbound and outbound calls are available.

Option2: Deploy the VCS using intelligent firewall, which means plug and play is possible without any further firewall configuration, but only outbound call is available.

 Please note that when the VCS is deployed with intelligent firewall, you have to open ports (as shown below) permission if they are restricted

Function	Port	Protocol Type
H.323 signal port	1720	TCP
Audio & Video media stream port	50000-50499	TCP/UDP
SIP (optional)	443	TCP/UDP

Bandwidth Requirements

- To ensure the performance of video conference. The recommended bandwidth for VC400\VC120 is as below:

Video Resolution	Recommended Bandwidth
Full HD 1080P	1.3Mb
People 1080P+Content 1080P	2.6Mb

- 💡 For more information of the configurations, contact your system administrator.
- 💡 The bandwidth mentioned above is based on two-way conference. Bandwidth in head office should be increased along with the growing number of connected branch offices .

Troubleshooting

- After the installation and deployment, you can test the VC400/VC120 by dialing Yealink Demo Room. If you can't dial out successfully, please contact your IT administrator to check the internal network configuration.
- Assume that you are A in head office and use the configuration method introduced in "Head Office" chapter on page 7, you are able to call B in branch office or Yealink Demo, but they cannot reach you. The most likely reason is the firewall or gateway in the environment does not support H.323

ALG feature. In this situation, please do as follows to enable NAT feature on VCS to solve this problem. (Do following steps via the remote control)

- Menu->Advanced(Admin Password:0000)->NAT/Firewall
- Select **【Auto】** from the **【Type】** pull-down list, the system will obtain public IP Address automatically.
- If the system does not obtain a public IP Address automatically, select **【Manual Settings】** from the **【Type】** pull-down list, and then enter the public IP address in the **【Public IP address】** field.



Yealink Test Room IP: 117.28.251.50、117.28.251.51



For more information, visit Yealink website:
www.yealink.com