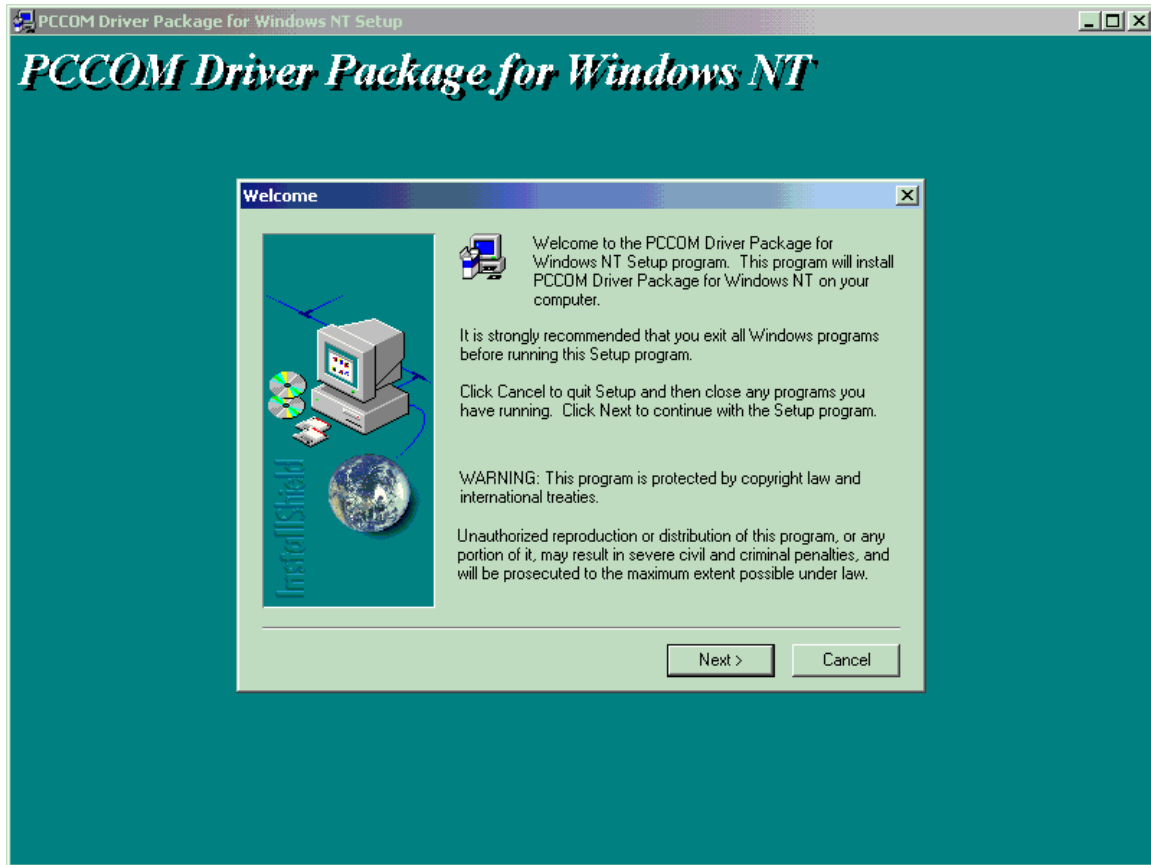
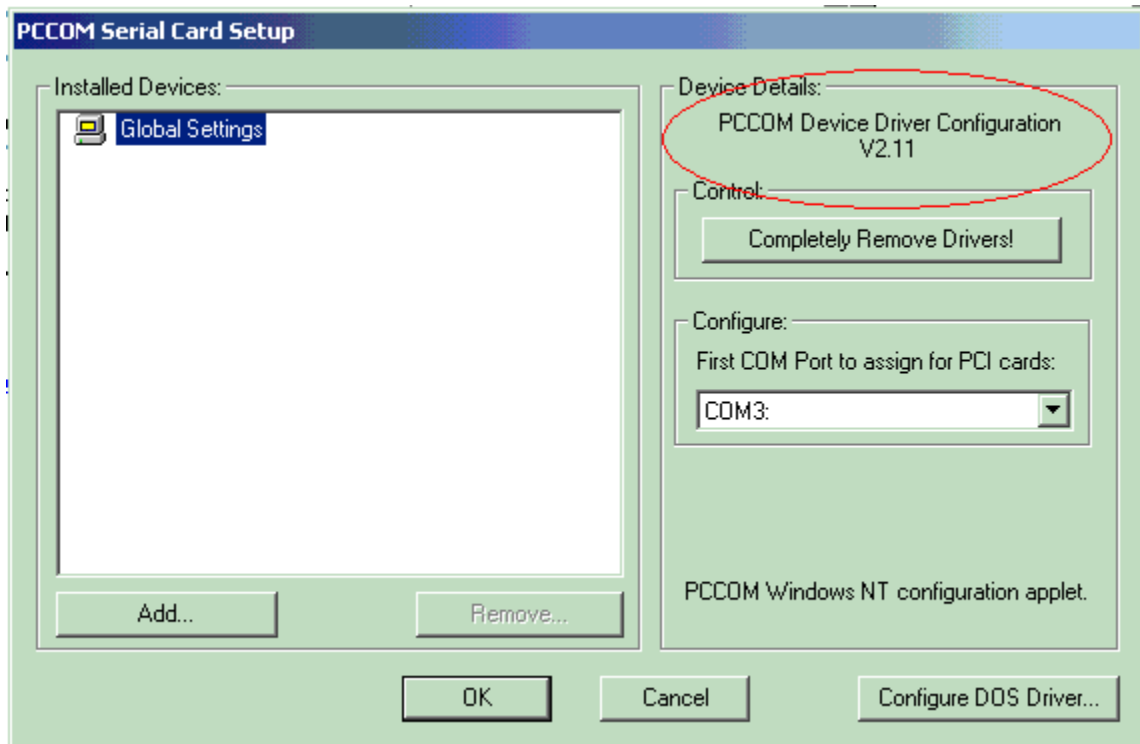


## Installing PCCOM at Windows 2000 (V2.11)

- 1) Run the Setup program. If you have the old driver installed on your computer remove it first before running the Setup program of the latest driver.



- 2) To see if you have the latest driver, Go to the control panel then open the "Decision PCCOM Adapters".



At the "Device Details" frame you have to see

PCCOM Device Driver Configuration  
V2.11

If you do not have the latest driver Please request for the latest version.

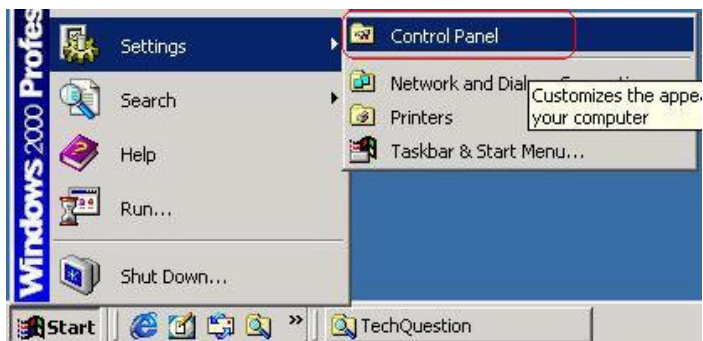
- 3) Shut down your PC and insert the PCCOM Card.  
Turn on your PC.



Please note that PCI cards will be autodetected when being installed into your computer. You have to configure ISA-based cards manually using the configuration utility applied.

## Installing ISA Card (4 port)

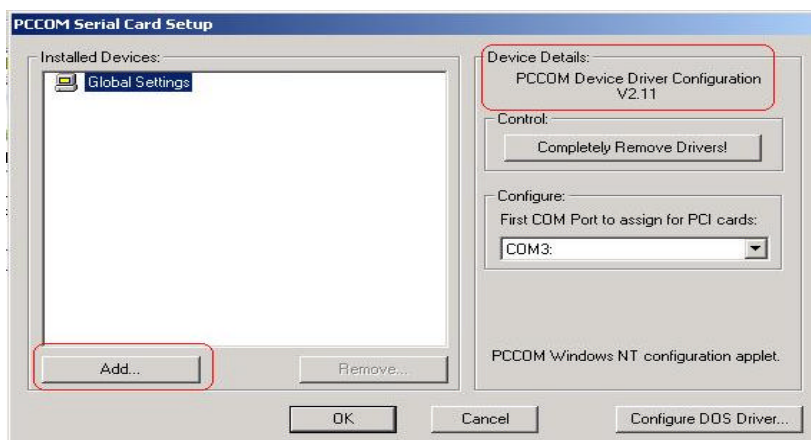
- 1) Go to the Control Panel as shown below.



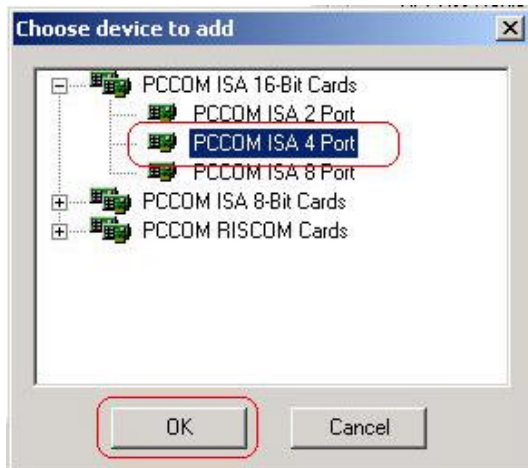
- 2) Select the "Decision PCCOM Adapters" as shown below.



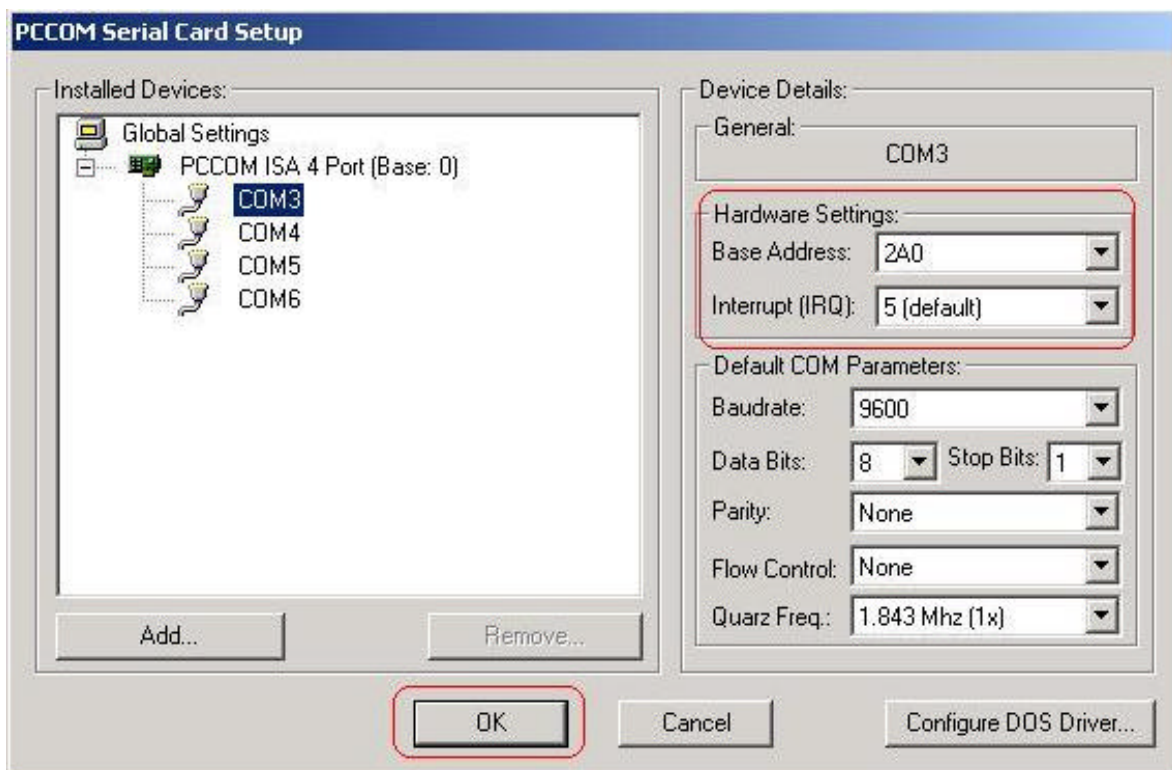
- 3) Click the "Add" button



- 4) Choose the card you want to install then click the OK button.



- 5) Check your hardware setting then click the OK button.



6) You can check your card with Hyper Terminal as shown below.

